

2021 Gulf-South Summit

Event Schedule

Mon, Mar 15, 2021

1:00pm

Welcome, Awards Presentation and Keynote Speaker Rev. Becca Stevens

🕒 1:00pm - 2:00pm, Mar 15

📍 Keynote

Gulf-South Summit Awards Presentations

Outstanding Faculty:

- Research - Dr. Neena Xavier, UAB and Brenau University - ([Link to Award Video](#))
- Instruction - Dr. Tammy Crutchfield, Mercer University - ([Link to Award Video](#))

Gulf-South Summit Keynote

The Story of Thistle Farms: How Communities Hope

Becca Stevens is an author, speaker, priest, social entrepreneur, founder and president of Thistle Farms. After experiencing the death of her father and subsequent child abuse when she was 5, Becca longed to open a sanctuary for survivors offering a loving community. In 1997, five women who had experienced trafficking, violence, and addiction were welcomed home.

Twenty years later, the organization continues to welcome women with free residences that provide housing, medical care, therapy and education for two years. Residents and graduates earn income through one of four social enterprises. The Global Market of Thistle Farms helps employ more than 1,800 women worldwide, and the national network has more than 40 sister communities.

Books by Becca Stevens

(please purchase from a local, independent bookstore if possible or consider ordering from [Bookshop.org](https://bookshop.org), an online bookstore with a mission to financially support local, independent bookstores.)

- [Love Heals](#)
- [Find Your Way Home: Words from the Street, Wisdom from the Heart](#)

Thistle Farms Story and Products

Learn more about Thistle Farms and how you can support their work by purchasing their products at <https://thistlefarms.org/>.

📣 Speakers



Becca Stevens Founder, Thistle Farms



Tim Stewart Director of Service-Learning, Belmont University



Allison Heidbrink Nanni Associate Director, Mann Center for Ethics and Leadership, Samford University

2:15pm

Poster Session I

🕒 2:15pm - 3:15pm, Mar 15

📍 Poster Tab on Whova

Attendees are encouraged to visit the Poster Gallery on Whova to check out the posters at any time, but many of the poster presenters will be available to talk with you directly about their work during this time.

3:30pm

Confronting the Past Through Art and Community Engagement: Service Learning as an Invitation to Rethink and Remember

🕒 3:30pm - 4:30pm, Mar 15

📍 Individual Presentation

This presentation will discuss Samford University's "Art and Community Engagement" service-learning course and its partnership with the Jefferson County Memorial Project. In the course, students created educational materials to bring awareness to the Equal Justice Initiative's Remembrance Project. Through the community partnership, students were challenged to reconsider their own community's history with racial injustice while developing a greater understanding of why memorials are an important element to restorative justice. This presentation will include feedback and information from both the instructor and student perspective regarding course design, student engagement, and course outcomes.

🗣️ Speakers



Joe Cory Professor of Art and Design, Samford University



Noah Stalcup Student, Samford University

Creating Sustainable Change: Guiding Student Leaders Beyond a Major Election Cycle

🕒 3:30pm - 4:30pm, Mar 15

📍 Individual Presentation

Strengthen your campus civic engagement movement while creating sustainable and effective change within your community. During a time of unprecedented challenges, the Campus Election Engagement Project (CEEP) rebuilt our fellowship program and tripled its size. This presentation will give you insight into our program development techniques and our best practices for evaluating and improving your own service learning department, service-oriented class, or civic engagement coalition.

🗣️ Speakers



Jessica Holtkamp Assistant Fellowship Director, Campus Election Engagement Project



Ella Lawson Fellows Program Intern, Campus Election Engagement Project

New Strategies for Successful Community Health & Wellness Partnerships

🕒 3:30pm - 4:30pm, Mar 15

📍 Panel Discussion

The UGA Archway Partnership is an outreach and engagement platform, linking community-identified needs to the higher education resources. The presenters will guide participants through the process of a locally-embedded faculty member facilitating student experiential learning, coordinating faculty research/scholarship, and engaging community stakeholders/champions. Through data-driven decision-making, identifying best practices, and creating/expanding campus partnerships-public service faculty are community coaches. Further, we will explore intentional collaboration techniques and strategies when building local stakeholder partnerships to breakdown community silos.

🗣️ Speakers



Sharon Liggett Public Service & Outreach Faculty, University of Georgia Archway Partnership



Laura Register Senior Policy Advisor, Capitol Affairs, Inc



Crystal Ramm Administrator, Grady General Hospital



Angel Jackson UGA

Design Thinking, Technical Writing, and Community Building

🕒 3:30pm - 4:30pm, Mar 15

📍 Panel Discussion

Lipscomb professors join former students and community partners with whom they've worked to discuss the application of Design Thinking to service-learning components of a technical writing program. Panelists will consider the reasoning behind bringing students together with a variety of populations - many of whom students likely have never interacted - discuss the effect of having students apply technical writing skills to organizations' document/communication needs, and review the impact for students, the community, and the writing program.

🗣️ Speakers



Kirsten Boatwright Adjunct faculty in the Department of English & Modern Languages, Lipscomb University



Sonya Green Associate Professor of English, Lipscomb University

Building Healthy Communities: Institutionalizing Community Engagement During COVID-19

🕒 3:30pm - 4:30pm, Mar 15

📍 Individual Presentation

While the Coronavirus pandemic wrought abrupt changes on a global level, community engagement practice took on heightened urgency to address the disparities that the pandemic laid bare. Based on the pilot phase of a community partnership initiative at a mid-south public university, this presentation argues for a shift to systems-level thinking to develop the collective infrastructure of entities working to improve quality of life.

🗣️ Speakers



Alyssa Wood Doctoral Candidate, The University of Mississippi



Albert Nylander Director, McLean Institute for Public Service and Community Engagement, Professor of Sociology, The University of Mississippi



Laura Martin Associate Director, McLean Institute for Public Service and Community Engagement, The University of Mississippi



Stephen Lenz Associate Professor of Counselor Education, The University of Mississippi



Curtis Hills Community Partner, The University of Mississippi

Building Bridges Rather Than Silos: A Panel Discussion of the Multi-Disciplinary Approach to Service-Learning at the University of Arkansas

🕒 3:30pm - 4:30pm, Mar 15

📍 Panel Discussion

Founded in 2014, the University of Arkansas (UA) Service-Learning Initiative (SLI) developed a process for service-learning course and research designation, faculty recognition and partner engagement. With no formal offerings in 2014, the SLI now boasts over 100 offerings a semester. Our panelists, who played a critical role in forming the SLI, discuss our processes, the rewards of domestic and international opportunities and the resolve to keep service-learning available throughout the Pandemic.

🗣️ Speakers



Angela Oxford Director Center for Community Engagement, University of Arkansas



Jennie Popp Founding Co-Chair of Service-Learning Initiative and Associate Dean of UA Honors College, University of Arkansas



Fran Hagstrom Associate Professor Communications Disorders, University of Arkansas



Angie Doss Director of Externships and Faculty Leflar School of Law, University of Arkansas



Rogelio Contreras Director of Social Innovation, Clinical Faculty at the Strategy, Entrepreneurship and Venture Innovation Department, Sam M. Walton College of Business, University of Arkansas



Casey Kayser Assistant Professor, University of Arkansas

UHD and the Near Northside Community Collaborate to Improve Residents' Quality of Life

🕒 3:30pm - 4:30pm, Mar 15

📍 Panel Discussion

The University of Houston-Downtown (UHD) is helping to improve the quality of life in the nearby Near Northside community. The Center for Community Engagement and Service Learning staff engage with community leaders and residents to understand the community and the residents' needs. Such conversations have led to the creation of a variety of projects in education, health, infrastructure, arts and others. Twenty four projects led by UHD faculty, staff and students are ongoing.

🗣️ Speakers



Poonam Salhotra UHD



Maria Bhattacharjee Associate Professor of Urban Education, University of Houston-Downtown



Hong Lin Professor of Computer Science, University of Houston-Downtown



Zeenat Mitha Lecturer in Communication, University of Houston-Downtown



Mesias Pedroza Lecturer of Biology and Biochemistry, University of Houston-Downtown

Teacher Preparation: Building Community with Children with Disabilities

🕒 3:30pm - 4:30pm, Mar 15

📍 Individual Presentation

This session will provide a discussion of two community/university service-learning partnerships developed to support pre-service teachers in understanding the needs of students with disabilities. Both partnerships were co-designed to meet community needs and to provide future teachers with experiences to form relationships with children with disabilities. This session will present the community issues the partnerships addressed, an overview of the partnerships, and preservice teacher outcomes.

🗣️ Speaker



Sally Barton-Arwood Professor of Education, Belmont University

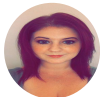
Student and Instructor Reflections on an Ecofeminist Embodied Pedagogy's Role in Building Community Partnerships

🕒 3:30pm - 4:30pm, Mar 15

📍 Panel Discussion

Presenter 1 describes the process of designing and implementing an ecofeminist curriculum for a community writing course and outlines the theoretical and pedagogical framework that influenced her curricular design. She is followed by 5 additional presenters, all of whom were students enrolled in the course Presenter 1 describes. They outline the ways in which their definitions of and approaches to community developed throughout the semester based on the coursework and describe their projects.

🗣️ Speakers



Rachel Dortin Assistant Professor of Writing, University of Central Arkansas



Ajitha Padala Student, Wayne State University



Yasir Mehmood Student, Wayne State University



Anthony Bally Student Assistant, Wayne State University



Priya Mathews, MA-CDT Certified Medical Assistant, 2020 Graduate, Wayne State University Alumni, Wayne State University



Paul Greer Student, Wayne State University



Alexandra Terry-Martin Student, Wayne State University

Implementing Service-Learning in Healthcare Education

🕒 3:30pm - 4:30pm, Mar 15

📍 Individual Presentation

We utilize graduate student perceptions of the barriers and benefits to service-learning (SL) in order to develop and implement a successful SL curriculum into a physician assistant (PA) Program. This presentation will address strategies for addressing barriers to improve students' perceptions of the SL experience. In addition, it will address the need for reemphasizing the benefits of SL to help students remain engaged with and improve their buy-in to the experience.

🗣️ Speakers



Neena Xavier Director of Academic Education, Assistant Professor, Brenau University



Peter Jones Assistant Professor, University of Alabama at Birmingham

Exploring Civic Engagement across the Disciplines through Faculty Development

Opportunities

🕒 3:30pm - 4:30pm, Mar 15

📍 Interactive Workshop

Faculty involvement and leadership are key components of effective community engagement and service-learning programs. This interactive workshop will introduce a variety of faculty development strategies that have been used at Berea College to encourage faculty from diverse academic disciplines to develop their community-engaged teaching and scholarship. The workshop will include participant discussion and exploration of how to strategically identify faculty development opportunities that will be most effective for promoting civic engagement across the disciplines.

🗣️ Speakers



Ashley Cochrane Director of the Center for Excellence in Learning through Service (CELTs), Berea College



Tracy Hodge Division I Chair / Associate Professor of Physics, Berea College



Mario Nakazawa Associate Professor of Computer Science, Berea College



Michelle Thornton Assistant Professor of Health & Human Performance, Berea College



Penelope Wong Associate Professor in Education Studies , Berea College

The Potential of Design Thinking Immersion for Community Engaged Learning

🕒 3:30pm - 4:30pm, Mar 15

📍 Interactive Workshop

How might we create, assess, and sustain community engaged curricula that yields long-term value for students and communities? This session guides participants through potential ways to incorporate and assess evidence-based practices with specific community-based learning goals. Facilitators will highlight findings from longitudinal research on an immersive semester program rooted in community engagement and design thinking and focused on developing civic-minded, community-engaged graduates. Participants will gain actionable ideas for implementing strategies relevant to their institutional contexts.

🗣️ Speakers



Phillip Motley Associate Professor, Communication Design, Elon University



Danielle Lake Director of Design Thinking & Associate Professor, Elon University

Tue, Mar 16, 2021

1:00pm

Welcome, Awards Presentation and Keynote Speaker Dr. Sekou Franklin

🕒 1:00pm - 2:00pm, Mar 16

📍 Keynote

Gulf-South Summit Awards Presentations

Outstanding Practitioners:

- Ralph Foster, Auburn University ([Link to Award Video](#))
- Mary Alice Morgan, Mercer University ([Link to Award Video](#))

Gulf-South Summit Keynote

Civic Engagement as a Tool for Critical Pedagogy and Building Transformative Communities on College Campuses

Dr. Sekou Franklin is an **Associate Professor in the Department of Political Science at Middle Tennessee State University (MTSU)**. He is the **author of *After the Rebellion: Black Youth, Social Movement Activism, and the Post-Civil Rights Generation*** (NYU Press, 2014) and edited the *State of Blacks in Middle Tennessee* (Urban League of Middle Tennessee, 2010/2011) and co-author (with Ray Block) of ***Losing Power: African Americans and Racial Polarization in Tennessee Politics*** (University of Georgia Press, 2020).

Dr. Franklin has worked closely with numerous groups in the last 15 years: Community Oversight Now, Urban EpiCenter, Tennessee Citizen Action, Tennessee Alliance for Progress, Ad Hoc Committee for Equity, TennCare Saves Lives Coalition, Nashville Black Covenant Coalition, Justice for Jefferson Street Coalition, Green-Collar Jobs Task Force of Nashville-Davidson County, Nashville Peace and Justice Center's Leadership Institute, Lawyers' Committee for Civil Rights Under Law, and Tennessee State Conference of NAACP. Currently, he is an instructor for the James Lawson Institute (JLI), which provides training in nonviolent resistance to activists, journalists, and organizers in North America. In March 2019, he participated in the South Asian Regional Institute on the Study and Practice of Strategic Nonviolent Action in Nepal that was hosted by the International Center on Nonviolent Conflict.

In November 2016, he co-coordinated the Tennessee Election Protection hotline in collaboration with the Lawyers' Committee for Civil Rights Under Law and has worked on voting rights cases. He received training in voting rights at the Southern Coalition for Social Justice's Census and Redistricting Institute in 2010. He also serves on the Tennessee Advisory Committee for the US Commission on Civil Rights; and serves on the coordinating committee of Democracy Nashville-Democratic Communities.

He is currently the President of the National Conference of Black Political Scientists. He resides in North Nashville with his wife and two daughters.

Books by Sekou Franklin

(please purchase from a local, independent bookstore if possible or consider ordering from [Bookshop.org](https://bookshop.org), an online bookstore with a mission to financially support local, independent bookstores.)

- [Losing Power: African Americans and Racial Polarization in Tennessee Politics](#)
- [After the Rebellion: Black Youth, Social Movement Activism, and the Post-Civil Rights Generation](#)

Speakers



Sekou Franklin Associate Professor of Political Science, Middle TN State University



Tim Stewart Director of Service-Learning, Belmont University



Allison Heidbrink Nanni Associate Director, Mann Center for Ethics and Leadership, Samford University

2:15pm

Are we a field or are we a movement, and why should we care? Revisiting recurring tensions

🕒 2:15pm - 3:15pm, Mar 16

📍 Individual Presentation

Is service-learning and community engagement (SLCE) best understood as an academic field or as a movement? Our answers ultimately define the scope and purpose of our work. This interactive session sees this not as an "either/or" but as a generative tension leading to "both/and" possibilities. Together, we will co-create models that are instructive for navigating this tension and we will share resources to us as we return to our own SLCE contexts.

Speakers



Patti H. Clayton Practioner-Scholar & Consultant, PHC Ventures; IUPUI; UNCG



Joe Bandy Assistant Director, Center for Teaching, Vanderbilt University

Cautious Collaboration: Community/University Engagement in the COVID-19 Era

🕒 2:15pm - 3:15pm, Mar 16

📍 Interactive Workshop

COVID-19 has created unprecedented challenges for service learning programs and the communities they serve. This workshop will begin by reviewing a study regarding the ways that COVID-19 has impacted service learning programs and their relationship with community partners. The workshop addresses this research and allows for participants to collaboratively identify approaches to facilitate service learning in the midst of the COVID-19 pandemic. Guidelines and design solutions for supporting service-learning will be collaboratively discussed.

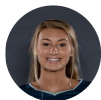
🗣️ Speakers



Ryan Couillou Assistant Professor of Psychology, Georgia Southern University



Beth McGee Assistant Professor and Program Coordinator , Georgia Southern University



Skylar Ball Undergraduate Student, Georgia Southern University



Tabitha Lamberth Graduate Student, Georgia Southern University

Let's Transform Together!: Empowering Women at a PWI

🕒 2:15pm - 3:15pm, Mar 16

📍 Interactive Workshop

The "Uniting Divine Sistahs" (UDS) Program hosted at Texas A&M University has been empowering African American women since 2006. We will share how the program has drastically impacted the participants and young girls in the community over the last 4 years. In this session, we will discuss how to implement an empowerment program with peer learning components, reflection papers, sewing circles, and community service in order to foster relationships and positively change the climate on your campus.

🗣️ Speakers



Sade Dawson-Love Coordinator of Leadership Education, University of Texas at Austin



Implementation of High Quality Service-Learning Courses to Improve Health & Wellness in the Rural South

🕒 2:15pm - 3:15pm, Mar 16

📍 Individual Presentation

We described the development and implementation of three service-learning (SL) courses on the topic of aging psychology, sociology and global perspectives in ethics. We present the theoretical foundation for our model of SL, an adaptation of the K-12 Service Learning Standards for Quality Practice (NYLC, 2008) and compare this approach to the the Civic Engagement VALUE rubric. We will describe how this was applied to foster a mentally and physically healthier community in the rural south. Finally, we present preliminary data on the impact of the program and our model for scaling this up in higher education.

🗣️ Speakers



Candace Lapan Assistant Professor of Psychology, Wingate University



Catherine Wright Associate Professor, Religion and Philosophy Department; Executive Director of the CCG, Wingate University



Lacey Ritter Assistant Professor of Sociology, Wingate University

Exploring a Vertically Aligned Service-Learning Program within a Nursing Curriculum

🕒 2:15pm - 3:15pm, Mar 16

📍 Panel Discussion

This panel, consisting of a service-learning director, dean, and faculty, will discuss a vertically aligned service-learning curriculum using a Stair-Step Model within an undergraduate nursing program at a public higher education institution. A relevant case study using qualitative data collected from student and faculty focus group sessions will also be presented to identify key programmatic elements and how this model could transfer into other academic disciplines.

🗣️ Speakers



Cody Cocchi Associate Director of Service-Learning, College of Coastal Georgia



Lydia Watkins Dean of the School of Nursing and Health Sciences, College of Coastal Georgia



Nicole Masano Chair of the School of Nursing and Health Sciences and Associate Professor of Nursing, College of Coastal Georgia

of Coastal Georgia



Maryanne Sandberg Assistant Professor of Nursing, College of Coastal Georgia

Creative Life and Relationships Emerging from Dia de los muertos

🕒 2:15pm - 3:15pm, Mar 16

📍 Panel Discussion

We sought to build a healthier and more inclusive community by building relationships across borders in a virtual educational gathering for Dia de los muertos, the Day of the Dead. Almost one hundred people from two US and two Mexican schools gathered with a Peruvian to learn, discuss, remember deceased loved ones, and make new friends. In this project we consider civic engagement in broader ideas of Global Citizenship Education as UNESCO explains this.

🗣️ Speakers



Sr. Martha Ann Kirk Religious Studies, Ettling Center for Civic Leadership and Sustainability, University of the Incarnate Word



Gabriel Saxton-Ruiz Associate Professor of Spanish, University of the Incarnate Word



Alyssa Kennedy Graduate Research Assistant, University of the Incarnate Word



Deborah Quinones Instructor and Department Chair of English, University of the Incarnate Word

The Virtual Fellowship

🕒 2:15pm - 3:15pm, Mar 16

📍 Individual Presentation

This session will describe how fellows in the Master's Program in Community Engagement at Merrimack College are providing organizational capacity-building to local nonprofit organizations through remote service. The session will offer creative ideas for how students can engage in meaningful service and how sites can utilize students in a COVID environment. The session will also consider the potential benefits and drawbacks of remote service experiences more broadly.

🗣️ Speaker



Audrey Falk Chair, Applied Human Development and Community Studies, Merrimack College

Experience UGA: Engaging the local school district through an innovative field trip program

🕒 2:15pm - 3:15pm, Mar 16

📍 Interactive Workshop

This workshop will introduce an innovative, university-wide campus/community engagement program called Experience UGA. The innovative field trip program brings over 12,000 students from the local school district to campus each year for a hands-on, curricular-based experiences. Critical program takeaways will be explored, and participants will learn about design-thinking concepts and participate in a mini Service-Learning Charrette “ concepts that were key to gaining stakeholder input and in creating the 10th Grade field trip experience.

🗣️ Speakers



Josh Podvin Assistant Director for Community Partnerships, University of Georgia



Jennifer Lewis Director, Center for Community Design & Preservation, University of Georgia

Collaborative Student Leadership in Civic Engagement

🕒 2:15pm - 3:15pm, Mar 16

📍 Panel Discussion

This presentation highlights the genesis, work, and future projects of the North Carolina Central University Civic Engagement Working Group (CEWG). This coalition of students, faculty, staff, alumni, and community came together to institutionalize civic engagement at the University. The presentation will allow participants to reflect on the resources they have in their communities and how those resources can be mobilized to build a more robust engagement of students and the community.

🗣️ Speakers



Calleen Herbert Director, NC Central University



Jarvis Hall Associate Professor of Political Science, North Carolina Central University



Shanetta Burris, MPA Alumna, Community Organizer, North Carolina Central University



Angela Lewis Civic Engagement & Advocacy Committee Chair, North Carolina Central University National Alumni Association



Lucy Mason Coordinator for Student-Athlete Leadership and Development, North Carolina Central University



Jazmyne Abney Undergraduate Student, North Carolina Central University

Service Learning and Community Engagement in 2020: Adapting to COVID-19 and Moving Forward During Times of Uncertainty

🕒 2:15pm - 3:15pm, Mar 16

📍 Individual Presentation

The COVID-19 pandemic forced institutions to adapt to unprecedented circumstances with very short notice. This presented unique challenges for service learning programs in medical schools, which typically require in-person community engagement. In this presentation, we will discuss how we adapted our service learning program and will explore challenges, successes, and lessons learned from three examples. Participants will have the opportunity to share their own stories and discuss their own lessons learned during this challenging time.

🗣️ Speakers



Claire Finney Program Manager, Office of Service Learning, University of Alabama at Birmingham School of Medicine



Caroline Harada Assistant Dean for Community-Engaged Scholarship, UAB School of Medicine



Garrett Barnes Student, University of Alabama at Birmingham

The big challenge: Motivating faculty to help build and sustain healthy communities

🕒 2:15pm - 3:15pm, Mar 16

📍 Panel Discussion

Working with faculty to teach community engaged courses is not a task for the faint at heart. This panel is comprised of dedicated people whose job it is to encourage, motivate, and support university faculty as they create mutually beneficial partnerships. These seasoned "College Coordinators" will share their strategies, research, and struggles "what worked and what did not" as they have assisted faculty over the years. Please join us and take home some helpful tips.

🗣️ Speakers



Joyce McCauley Professor, College of Education & Executive Director of the Center for Community Engagement, Sam Houston State University



Magdalena Denham SHSU



Zachary Doleshal Clinical Assistant Professor, Sam Houston State University



Danica Schieber Assistant Professor of Business Communication, Sam Houston State University



Ricardo Montelongo Associate Professor, Department of Educational Leadership, Sam Houston State University



Susie Stone Lecturer, Faculty Population Health, Sam Houston State University



Lee Miller Professor, Department of Sociology, Sam Houston State University

The Four Components of a Healthy Community: Working with Communities to Thrive

🕒 2:15pm - 3:15pm, Mar 16

📍 Individual Presentation

In this interactive workshop, participants will be led through a case example of a community garden intentionally designed to address barriers identified by the community as impeding their ability to thrive. Using a model for the 4 components of a healthy community (Morton, 2019) participants will then discuss and explore strategies for structuring projects so that resources are redistributed in ways that allow communities to take care of themselves.

🗣️ Speakers



Lynne-Marie Shea Graduate Student, Clinical Psychology PhD Student, Suffolk University



Lauren Grenier Doctoral Candidate in Clinical Psychology, Suffolk University

3:30pm

Remote Engagement: Service-Learning and Mural Painting

🕒 3:30pm - 4:30pm, Mar 16

📍 Individual Presentation

Please use the Whova desktop/web app and choose join in Zoom to view this session.

When COVID-19 stopped efforts to complete a collaborative mural depicting Intercultural Harmony, remote tutorials replaced in-person efforts between university students and the local Boys & Girls Club (BGC). Participants collaboratively designed an illustration and graphed it into 16 parts. Eight art education students met with eight (BGC) Club members to each paint one part of the graphed image. The completed

mural, 64 inches by 64 inches, will appear in a public art show, June, 2021.

Speaker



Maggie Leysath Assistant Professor, School of Art, Stephen F. Austin State University

Instructional Approaches to Facilitate Service-Learning into an Existing Undergraduate Curriculum

🕒 3:30pm - 4:30pm, Mar 16

📍 Panel Discussion

Join us for a panel presentation with university teachers on their journey of implementing varying instructional approaches to facilitate Service-Learning into their existing undergraduate curriculum. You'll have the opportunity to hear about the instructional approaches including collaborative consultation, learner-centered, and self-discovery when working through establishing goals, community partnerships, and sharing failures and successes. Attendees will be encouraged to share their own experiences, ask questions, and build a collaborative community to focus on the service-learning experience.

Speakers



Rebekah Luong FCS Program Director and Clinical Instructor, University of Central Arkansas



Kathryn Carroll Assistant Professor, Department of Nutrition and Family Sciences, University of Central Arkansas



Monica Lieblong Clinical Instructor, University of Central Arkansas Nutrition and Family Sciences Department

Expanding Access to Transformational Service Experiences: Engaging Undergraduates in a State AmeriCorps Program

🕒 3:30pm - 4:30pm, Mar 16

📍 Individual Presentation

The University of Central Arkansas launched a state AmeriCorps program in 2019, placing 16 currently enrolled students with select community partner host sites to engage in intensive service experiences in food insecurity, tutoring and mentoring, and financial opportunity. The program uses a co-curricular service-learning model to provide support and reflection opportunities to service members. The program directors will provide information about the model and lessons learned from service members and partners.

Speakers



Lesley Graybeal Director of Service-Learning, University of Central Arkansas



Victoria Mays Volunteer Coordinator, University of Central Arkansas

What's Your Community Engagement Story? The gifts, challenges and opportunities in tracking community engagement

🕒 3:30pm - 4:30pm, Mar 16

📍 Panel Discussion

This panel will provide an opportunity for three campuses of various size and focus to share how they made a strategic decision to implement a community engagement software platform to provide a space for collaboration among multiple stakeholders. They will share what lead up to the decision to adopt such a software, what problems they have solved through adoption, what challenges were encountered and what opportunities they see as they leverage the platform. Additionally panelists will highlight how such a software helped them pivot to an online/virtual environment to continue community engagement work during the pandemic. Ultimately they will share how the data collection and analysis is helping them tell their community engagement story of building (rebuilding) healthy communities.

🗣️ Speakers



Brian Halderman Director of Community Engagement and Success, GivePulse



Rhoda Reddix Associate Professor, School of Arts and Sciences; Director, Service-Learning Program, Franciscan Missionaries of Our Lady University



Hannah Nabi (she/her) Associate Director, Research that Reaches Out, Mercer University



Amy Chatham Director Service Learning and Undergraduate Reserch, The University of Alabama at Birmingham

Healthier Communities, Healthier Students

🕒 3:30pm - 4:30pm, Mar 16

📍 Interactive Workshop

Students in our classes have often reported that service makes them feel calmer, happier, and less stressed. Building on such initial anecdotal reports, two of us explicitly designed our service learning classes around themes of wellbeing and happiness. We will lead a series of activities from perspectives of faculty, students, and community partners to enhance integration of student wellbeing into service classes that can also promote community health.

🗣️ Speakers



Mark Meier Instructor, Department of Focused Inquiry, Virginia Commonwealth University



Sara Q. Barton Coordinator, Virginia Commonwealth University



Michaux Dempster Assistant Professor, Department of Focused Inquiry, Virginia Commonwealth University



Ywone Edwards-Ingram Assistant Professor, Department of Focused Inquiry, Virginia Commonwealth University



Jordan Brown Director of Education & Programs, Visual Arts Center of Richmond

Building a New Service-Learning Partnership through Virtual Connections

🕒 3:30pm - 4:30pm, Mar 16

📍 Panel Discussion

Please use the Whova desktop/web app and choose join in Zoom to view this session.

This panel includes multiple stakeholders who will offer their perspectives on how COVID-19 prompted an unexpected opportunity to establish a brand-new, interdisciplinary Service-Learning project that was executed across state-lines exclusively via Zoom. Representatives from the North Carolina Museum of Natural Science at Whiteville community partner and University faculty colleagues in a Teacher Education department will discuss their roles, analyze the potentials/problems, and offer tips for new partnerships made possible through virtual connections.

🗣️ Speakers



Lauren Burrow Assoc. Professor Elementary Ed, Stephen F Austin State University



Brian Wuertz Communications Chair, Environmental Educators of North Carolina



Shelby Laird NCMNS at Whiteville



Dr. Tonya Jeffery Asst. Professor Education Studies, SFASU

Healthy Food, Healthy Body, Healthy Community, Healthy Earth

🕒 3:30pm - 4:30pm, Mar 16

📍 Panel Discussion

The State Botanical Garden of Georgia, Campus Kitchen and UGarden, all University of Georgia affiliates, have been working in partnership to develop hunger relief aid to community members in Athens, Georgia. The Campus Kitchen program prepares meals from food that has been recovered from grocery stores and fresh produce from the student-run university garden and the Alice H. Richards Children's Garden. Over 13,000 pounds of food has been delivered to community members experiencing food insecurity from March through October of 2020.

🗣️ Speakers



Cora Keber Director of Education, State Botanical Garden of Georgia



JoHannah Biang UGarden Farm Manager, University of Georgia



Andie Bisceglia Campus Kitchen Program Coordinator, University of Georgia



Katie McCollum Alice H. Richards Children's Garden Curator, State Botanical Garden of Georgia at the University of Georgia

Cultivating healthy leaders for a lifetime of community-engaged work

🕒 3:30pm - 4:30pm, Mar 16

📍 Interactive Workshop

How do we prepare students for a lifetime of sustainable, community-engaged work? This interactive session will explore how the Center for Excellence in Learning through Service (CELTS) at Berea College involves students in a team-based leadership development model that provides students with scaffolded and developmental opportunities for developing skills, knowledge, and practices of community-engaged professionals. Participants will leave the session with a practical tool and a plan for supporting students in skill-development.

🗣️ Speakers



Ashley Cochrane Director of the Center for Excellence in Learning through Service (CELTS), Berea College



Sarah Rohrer Associate Director of CELTS (Center for Excellence in Learning through Service), Berea College



Michaela Mallory VISTA, Training Resource Specialist, CELTS (Center for Excellence in Learning through Service), Berea College



Jennifer Johnson Student, Berea College



Paige Sexton CELTS

Affect and Learning through Service: A New Materialist Framework

🕒 3:30pm - 4:30pm, Mar 16

📍 Individual Presentation

This presentation explores a longstanding community partnership through the lens of New Materialism, examining how bodies, spaces, and objects provide important insights about community partnership, student affect, and learning through service. Stemming from a semester-long study of service-learning practice, the presentation asks attendees to consider how New Materialist ideas might benefit their own service-learning practices.

🗣️ Speaker



Jason Lovvorn Associate Professor of English, Belmont University

Building Healthy Communities Through Collaboration- Evaluating Community Transformation

🕒 3:30pm - 4:30pm, Mar 16

📍 Interactive Workshop

Through the placement of a faculty member in the community, the Archway Partnership model provides the foundation for a sustained relationship between rural Georgia communities and higher education resources to promote healthy community and economic development. This interactive workshop will involve several tools used by the Archway Partnership to evaluate collaboration and community transformation over time. Participants will have the opportunity to take a questionnaire that they can use when evaluating community transformations.

🗣️ Speakers



Sam Perren University of Georgia



Michelle Elliott Public Service Faculty, UGA Archway Partnership



Rob Grabowski UGA - Archway Partnership



Communities of Practice (CoP) as a Mechanism of Support and Growth in Community Engagement Work across the Country

🕒 3:30pm - 4:30pm, Mar 16

📍 Panel Discussion

Faculty & staff involved in community engagement work often find vastly different levels of support at different universities across the country, also encounter different structures, policies, practices, and even definitions of what service-learning or community engagement looks like within their specific university and community context. This panel session involves faculty and staff from across the country who participated in a Campus Compact Community of Practice (CoP), who shared definitions and campus stories to support each other in their efforts.

🗣️ Speakers



Dr. Daniel Fidalgo Tomé Community Engagement Program Manager, Thomas Edison State University



Tanya Whiteman Assistant Professor of Kinesiology, Anderson University



Taylor Hibell AmeriCorps VISTA: Economic Development Programming Coordinator, Stetson University



Beth Claassen Thrush Project Policy Analyst; Adjunct Faculty, University of California, Riverside



Karla Avalos Guzman Program Coordinator, Womens Leadership & Student Involvement, Mount Saint Mary's University



Angie Cuevas Service Learning Associate, UNO Service Learning Academy



Megan Valkenburg Coordinator. Student Development, Wilkes University

CRIES FROM CLOTILDA: Unmasking Generations of Environmental, Political, and Economic Exploitation of Africatown

🕒 3:30pm - 4:30pm, Mar 16

📍 Panel Discussion

Spring Hill College partnered with community leaders of Africatown, AL to help articulate their vision for their community and document exploitative processes that contributed to the decline of this historically rich, but economically poor neighborhood in Mobile. Community partners and undergraduate civic

leadership fellows will summarize the students' work facilitating a community conversation, researching the exploitation of this community, and providing key recommendations.

Speakers



Erik P. Goldschmidt, Ph.D. Director, Albert S. Foley Community Service Center, Spring Hill College



Anderson Flen President, Mobile County Training School Alumni Association



Chris Williams Pastor, Yorktown Missionary Baptist Church



Hana Blalack Civic Fellow, Spring Hill College



Elisabeth Dreaden Civic Fellow, Spring Hill College



Christian Gilbert Civic Fellow, Spring Hill College



Makayla Rodriguez Civic Fellow, Spring Hill College



Zachary Schultz Civic Fellow, Spring Hill College

Wed, Mar 17, 2021

1:00pm

Welcome, Awards Presentation and Keynote Speaker Elaine Weiss

🕒 1:00pm - 2:00pm, Mar 17

📍 Keynote

Gulf-South Summit Awards Presentations

Outstanding Community Collaboration and Partnership:

- Collaboration - Judge Troy Braswell, Faulkner County Juvenile Court ([Link to Award Video](#))
- Partnership - Eve Anthony, Athens Community Council on Aging & University of Georgia ([Link to Award Video](#))

Gulf-South Summit Keynote

Women's Fight for Political Equality: Building A Coalition for Change

Elaine Weiss is a Baltimore-based journalist and author, whose feature writing has been recognized with prizes from the Society of Professional Journalists, and her byline has appeared in many national publications, as well as in reports for National Public Radio. Her long-form writing garnered a Pushcart Prize "Editor's Choice" award, and she is a proud MacDowell Colony Fellow. Her first book, *Fruits of Victory: The Woman's Land Army in the Great War* was excerpted in *Smithsonian Magazine* online and featured on C-Span.

Weiss' new book, *The Woman's Hour: The Great Fight to Win the Vote* (Viking/Penguin, 2018) has received critical acclaim from the New York Times, Wall St. Journal, Christian Science Monitor, and NPR, among others, hailed as a "riveting, nail-biting political thriller" with powerful parallels to today's political environment. She has presented talks about the book and the woman suffrage movement at the Library of Congress, National Archives, New York Historical Society, and many other venues. *The Woman's Hour* was a finalist for the 2019 Chautauqua Prize and won the American Bar Association's highest honor, the 2019 Silver Gavel Award.

Steven Spielberg's Amblin production company has optioned the book for adaptation, with Hillary Rodham Clinton serving as Executive Producer.

Books by Elaine Weiss

(please purchase from a local, independent bookstore if possible or consider ordering from [Bookshop.org](https://bookshop.org), an online bookstore with a mission to financially support local, independent bookstores.)

- [The Woman's Hour: The Great Fight to Win the Vote](#)

Speakers



Elaine Weiss Author and Journalist



Tim Stewart Director of Service-Learning, Belmont University



Allison Heidbrink Nanni Associate Director, Mann Center for Ethics and Leadership, Samford University

2:15pm

Poster Session II

🕒 2:15pm - 3:15pm, Mar 17

📍 Poster Tab on Whova

Attendees are encouraged to visit the Poster Gallery on Whova to check out the posters at any time, but many of the poster presenters will be available to talk with you directly about their work during this time.

3:30pm

Campus-Community Partnership: Working Together for a Trauma-Responsive Community

🕒 3:30pm - 4:30pm, Mar 17

📍 Panel Discussion

Maryville College (MC), Maryville City Schools Family Resource Center (FRC), and the Harmony Family Center (HFC) collaborate to promote trauma-informed practices throughout Maryville College classrooms,

Maryville City Schools' homework assistance program, and across the wider community. MC students are trained regarding trauma and restorative practices to work with children, served by the FRC, who have experienced adversity. In collaboration with the HFC, the College, schools, drug rehabilitation services, juvenile justice center, CASA and other community sectors are joined, as a Trauma Responsive Community Group, for the shared vision of creating a trauma-informed and resilient community. Participants will experience trauma-informed techniques for behavioral regulation and restorative practices and learn about additional collaborative efforts for the community's COVID recovery.

Speakers



Ariane Schratter Professor of Psychology, Maryville College



Debby Skyler Family Resource Director, Maryville City Schools



Keith Bailey Training Director, Harmony Family Center



Amy Gilliland Director of Community Engagement, Maryville College

Developing and Enhancing services to older adults through educational leadership

🕒 3:30pm - 4:30pm, Mar 17

📍 Individual Presentation

Educators, as leaders, mentor and guide students. The social change model (SCM) describes this relationship as a collaborative, values-based, socially responsible process that impacts change on the behalf of others. Community service is viewed as a powerful vehicle for leadership. This presentation will demonstrate the integration of faculty service, scholarship and teaching with community agencies and an occupational therapy doctoral curriculum. The presenter will demonstrate the impact of student research and capstone projects on two community agencies that serve older adults.

Speaker



Debra Gibbs Associate Professor, Occupational Therapy, Belmont University

Diving Deeper: Strengthening Advocacy, Dialogue, and Structural Analysis Skills through Summer Internships

🕒 3:30pm - 4:30pm, Mar 17

📍 Panel Discussion

In this panel presentation, attendees will learn about the design and central pedagogical components of John Carroll University's Advocacy, Solidarity, and Social Action Summer Internship Program. Through full time placements at Cleveland non-profits, interns conduct community-based research, develop advocacy skills, and examine systems and structures that perpetuate inequality. Staff coordinators, past interns, and community partners will share experiences and core elements of a program that combines hands-on

experience with root cause analysis.

Speakers



Heather Craigie Assistant Director of Student Development, John Carroll University Center for Service and Social Action



Katherine Feely Director, Center for Service and Social Action, John Carroll University



John Jackson Assistant Director, Community Partnerships Center for Service and Social Action, John Carroll University

Analyzing the Impacts of the COVID-19 Pandemic on Nonprofit Organizational Programming

🕒 3:30pm - 4:30pm, Mar 17

📍 Panel Discussion

An interactive presentation focused on outputs and future directions for programming in a post-pandemic setting. In coordination with the Life Enrichment Center, an organization that conducts educational programming for adults with Intellectual and Development Disabilities, a logic model was created to address changes in programming and subsequent impacts from the individual to organizational level. Multiple perspectives were received through interviews and analyzed with other data. We will engage the audience in rich discussion and application.

Speakers



Kelley Ditzel Assistant Professor, Government & Sociology, Georgia College & State University



Alex Siggers Undergraduate Student, Nonprofit Certification Candidate, Georgia College



Barbara Coleman Executive Director, Baldwin Life Enrichment Center



Jay Warren Activities Director and Music Therapist, Baldwin Life Enrichment Center

Incorporating Inclusive Health Learning Strategies Through Service-Learning and Interprofessional Education

🕒 3:30pm - 4:30pm, Mar 17

📍 Individual Presentation

Providing inclusive health programs for individuals with intellectual and developmental disabilities requires training and skills absent in college students' educational experiences. Service-learning is positioned to provide students with applied learning opportunities while increasing the health programming available to individuals with intellectual and developmental disabilities. The purpose of the service-learning project was to incorporate inclusive health strategies and inter professional education through an on-campus Special Olympics event. The outcomes and student learning strategies will be discussed.

Speakers



Duston Morris Associate Professor, University Of Central Arkansas



Camie Powell Director of Marketing and Partnerships, University of Central Arkansas and SOAR



Denise Demers Associate Professor, University of Central Arkansas



Lesley Graybeal Director of Service-Learning, University of Central Arkansas

Reflection Strategies to Enhance Online Service-Learning

🕒 3:30pm - 4:30pm, Mar 17

📍 Interactive Workshop

Critical reflection is a key element of any service-learning course, including online service-learning, where well-implemented reflection can be vital to enhancing learning as well as maximizing student engagement and cohesion. This workshop makes the case for expanding online service-learning reflection activities to multiple modalities; presents and models a range of strategies for reflection and community building in e-service-learning; and shares lessons learned and tips from faculty from several disciplines.

Speakers



Paul Matthews Associate Director, Office of Service-Learning, University of Georgia Office of Service-Learning



Melissa Landers-Potts Senior Lecturer, University of Georgia



Roy Legette Professor, Music Education, University of Georgia



Jill Stefaniak Assistant Professor, Learning, Design, and Technology, University of Georgia



Kathy Thompson Clinical Professor, Educational Theory & Practice, University of Georgia



Brandy Walker Public Service Faculty, University of Georgia

How the Carnegie Classification Created an Unconventional, Collaborative Partnership Between Two Rival R1 Public Universities

🕒 3:30pm - 4:30pm, Mar 17

📍 Individual Presentation

In 2005 the Carnegie Foundation launched the community engagement classification to recognize institutions committed to community engagement. In Mississippi, two rival public universities collaborated in developing their respective 2020 Carnegie applications. This session presents institutional collaboration as a method for completing the Carnegie community engagement classification. The presentation discusses the successes and challenges of the process and how each institution benefited from the other's perspective while crafting their own successful application.

🗣️ Speakers



Meggan Franks Volunteer & Leadership Specialist, Louisiana State University/LSU AgCenter



Marshall Smith Assistant Vice Chancellor for Diversity & Community Engagement, The University of Mississippi

COPIL: SLCE Practitioner-Scholars Building Healthy Communities and Common Ground through Co-Inquiry

🕒 3:30pm - 4:30pm, Mar 17

📍 Interactive Workshop

Please use the Whova desktop/web app and choose join in Zoom to view this session.

Shared language is important for the flourishing of healthy community-campus engagement, especially as partnerships broaden to include community residents as well as organizations, but how can we find this common ground? This session shares related work of COPIL (Community of Practice, Inquiry, & Learning), a group of around 25 practitioner-scholars mostly from NC. Facilitators will outline goals, structure, and processes of COPIL and guide participants through an example of inquiry into SLCE's core terms.

🗣️ Speakers



Catherine Wright Associate Professor, Religion and Philosophy Department; Executive Director of the CCG, Wingate University



Melissa L. Lyon Service-Learning Program Manager, Fayetteville State University



Allison Walker Instructor, Department of English, High Point University



Patti H. Clayton Practioner-Scholar & Consultant, PHC Ventures; IUPUI; UNCG



Leslie Garvin Executive Director, North Carolina Campus Compact

Fishers of Men: Peer community health advocates

🕒 3:30pm - 4:30pm, Mar 17

📍 Panel Discussion

The University of Georgia (UGA) Archway Partnership connects communities to higher education resources to address locally identified needs. An assessment in Pulaski County identified the opportunity for greater health education, particularly among men. The UGA College of Pharmacy and School of Social Work, along with the Morehouse School of Medicine, trained a group of African American men to serve as a team of faith-based community health advocates in middle Georgia. The team is now in the process of forming an advisory board to work more effectively with potential health resources and address the new issue of COVID-19's impact on African American communities.

🗣️ Speakers



Sherrie' Raleigh Archway Professional, Archway Partnership



Henry Young Associate Professor, Director, Pharmaceutical Health Services, Outcomes and Policy (PHSOP), University of Georgia, College of Pharmacy



Tiffany Washington Associate Professor, School of Social Work, University of Georgia



Brian Rivers Director, Cancer Health Equity Institute, Morehouse School of Medicine



Sharon Liggett Public Service & Outreach Faculty, University of Georgia Archway Partnership



Keith Green Pastor, Pulaski County Ministerial Association



Greg Brown Community Service Representative, SunMark Community Bank

Collaborating to Address Community Challenges in the COVID-Era

🕒 3:30pm - 4:30pm, Mar 17

📍 Panel Discussion

This panel discussion includes various perspectives on a sequence of programs related to local food insecurity conducted by CentreWorks, a new downtown initiative of Centre College aimed at fostering community engagement and entrepreneurial development. It demonstrates how community-based learning can thrive even in an all-digital format in the midst of a global pandemic, with positive outcomes for students and long term residents alike.

🗣️ Speakers



Andrew Patrick Associate Director of CentreWorks / Assistant Professor of History, Centre College



Jeff Jewel Executive Director, DANVILLE-BOYLE COUNTY CHAMBER OF COMMERCE INC



Phoenix Staten Undergraduate Student, Centre College



John Bingaman CentreWorks



Anthony Margida CentreWorks



Andrea Margida Executive Director of CentreWorks, Centre College

Community Development through Higher Ed Partnerships

🕒 3:30pm - 4:30pm, Mar 17

📍 Concurrent Session

In this presentation, Dr. Heather Farley and Michael Burns (C2P2) will discuss the ways they have worked together to help connect students with underserved communities in Brunswick, GA where poverty is nearly 40% and income gaps are significant. C2P2 not only connects communities with colleges, but also brings together different higher education institutions from around the country to work collaboratively on the complex challenges associated with economic development. These multi-institution collaborations will be highlighted as a model for service learning.

🗣️ Speakers



Heather Farley Chair, Department of Criminal Justice, Public Policy & Management, College of Coastal Georgia



Michael Burns CEO/Executive Director, Community College Partners Program

Thu, Mar 18, 2021

1:00pm

Final Awards Presentation, Closing Words and "Big Reveal" of the 2022 Gulf-South Summit Site

🕒 1:00pm - 1:10pm, Mar 18

📍 Keynote

Gulf-South Summit Awards Presentations

Outstanding Student Contribution:

- Aubrie Strange, Samford University ([Link to Award Video](#))
- Congratulations to All Award Winners! ([Link to Award Video](#))

The 2022 Gulf-South Summit will be in beautiful Baton Rouge, Louisiana , and hosted by Louisiana State University, Franciscan Missionaries of Our Lady University and Tulane University!

Baton Rouge Videos:

- [We Are Baton Rouge](#)
- [Hidden Treasures](#)

🗣️ Speakers



Tim Stewart Director of Service-Learning, Belmont University



Allison Heidbrink Nanni Associate Director, Mann Center for Ethics and Leadership, Samford University

1:15pm

Round Table - 2021 Gulf-South Summit Membership

🕒 1:15pm - 2:00pm, Mar 18

📍 Round Tables

Come learn about the opportunities and benefits of being a member of the Gulf-South Summit!

Hosted by Tim Stewart, Director of Service-Learning at Belmont University and Chair of the 2021 Gulf-South Summit Executive Committee.

🗣️ Speaker



Tim Stewart Director of Service-Learning, Belmont University

Round Table - Arts and Humanities

🕒 1:15pm - 2:00pm, Mar 18

📍 Round Tables

Come join this discussion of service-learning as it relates to the Arts and Humanities.

Hosted by Joe Cory, professor of Art and Design at Samford University.

🗣️ Speaker



Joe Cory Professor of Art and Design, Samford University

Round Table - Critical Reflection and Design Thinking

🕒 1:15pm - 2:00pm, Mar 18

📍 Round Tables

Come join this discussion of service-learning as it relates to Critical Reflection and Design Thinking.

Hosted by Josh Podvin, Assistant Director for Community Partnerships at the University of Georgia and Kirsten Boatwright, Adjunct Faculty in the Department of English & Modern Languages at Lipscomb University

🗣️ Speakers



Josh Podvin Assistant Director for Community Partnerships, University of Georgia



Kirsten Boatwright Adjunct faculty in the Department of English & Modern Languages, Lipscomb University

Round Table - Building Healthy Communities

🕒 1:15pm - 2:00pm, Mar 18

📍 Round Tables

Come join this discussion of service-learning as it relates to Building Healthy Communities.

Hosted by Angelique Jackson, Operations Coordinator with the Archway Partnership at the University of Georgia

🗣️ Speaker



Angel Jackson UGA

Round Table - Community Engagement in Healthcare Education

🕒 1:15pm - 2:00pm, Mar 18

📍 Round Tables

Come join this discussion of service-learning as it relates to Community Engagement in Healthcare Education.

Hosted by Cody Cocchi, Associate Director of Service-Learning at the College of Coastal Georgia

📣 Speaker



Cody Cocchi Associate Director of Service-Learning, College of Coastal Georgia

Round Table - Community Engagement and Student Leadership

🕒 1:15pm - 2:00pm, Mar 18

📍 Round Tables

Come join this discussion of service-learning as it relates to Community Engagement and Student Leadership.

Hosted by Ashley Cochrane, Director of the Center for Excellence in Learning through Service (CELTS) at Berea College

📣 Speaker



Ashley Cochrane Director of the Center for Excellence in Learning through Service (CELTS), Berea College

Round Table - The STEM of Service-Learning

🕒 1:15pm - 2:00pm, Mar 18

📍 Round Tables

Come join this discussion of service-learning as it relates to The STEM of Service-Learning.

Hosted by Kate Hayden, Assistant Professor of Chemistry at Birmingham Southern College

📣 Speaker



Kate Hayden Assistant Professor of Chemistry, Birmingham-Southern College

Round Table - Community Intercultural Competency, and Diversity

🕒 1:15pm - 2:00pm, Mar 18

📍 Round Tables

Come join this discussion of service-learning as it relates to Community Intercultural Competency, and Diversity.

Hosted by Raquel Castro, Assistant Professor of Spanish in the Department of World Languages, Literatures & Cultures at the University of Arkansas

Passcode: Com2021!

🗣️ Speaker



Raquel Castro Assistant Professor, World Languages, Literatures, & Cultures, University of Arkansas

Round Table - Promoting Advocacy in Online Community Engagement

🕒 1:15pm - 2:00pm, Mar 18

📍 Round Tables

Come join this discussion of service-learning as it relates to Promoting Advocacy in Online Community Engagement.

Hosted by Heather Craigie, Assistant Director for Student Development in the Center for Service and Social Action at John Carroll University

🗣️ Speaker



Heather Craigie Assistant Director of Student Development, John Carroll University Center for Service and Social Action

Round Table - Advocating for Inclusive Communities

🕒 1:15pm - 2:00pm, Mar 18

📍 Round Tables

Come join this discussion of service-learning as it relates to Advocating for Inclusive Communities.

Hosted by Erik Goldschmidt, Director, Albert S. Foley Community Service Center at Spring Hill College

🗣️ Speaker



Erik P. Goldschmidt, Ph.D. Director, Albert S. Foley Community Service Center, Spring Hill College

Round Table - Service-Learning Course Design and Assessment

🕒 1:15pm - 2:00pm, Mar 18

📍 Round Tables

Come join this open "round-table" discussion of ideas and tools for Service-Learning Course Design and Assessment.

Hosted by Paul Matthews, Associate Director, Office of Service-Learning at the University of Georgia

 **Speaker**



Paul Matthews Associate Director, Office of Service-Learning, University of Georgia Office of Service-Learning

Round Table - Empowering Medically Underserved Communities

🕒 1:15pm - 2:00pm, Mar 18

📍 Round Tables

Come join this discussion of service-learning as it relates to Empowering Medically Underserved Communities.

Hosted by Maryanne Sandberg, Assistant Professor of Nursing, College of Coastal Georgia

 **Speaker**



Maryanne Sandberg Assistant Professor of Nursing, College of Coastal Georgia

Round Table - Innovative Strategies for Community Engagement During A Pandemic

🕒 1:15pm - 2:00pm, Mar 18

📍 Round Tables

Come join this discussion of service-learning as it relates to Innovative Strategies for Community Engagement During A Pandemic.

Hosted by Sarah Becker, Director, Center for Community Engagement, Learning and Leadership (CCELL) at Louisiana State University

 **Speaker**



Sarah Becker Director, CCELL, Louisiana State University

Round Table - Transdisciplinary Community Engagement

🕒 1:15pm - 2:00pm, Mar 18

📍 Round Tables

Come join this discussion of service-learning as it relates to Transdisciplinary Community Engagement.

Hosted by Angela Oxford, Director Center for Community Engagement at the University of Arkansas

 **Speaker**



Angela Oxford Director Center for Community Engagement, University of Arkansas

2:15pm

Service Learning as a Tool for Bilingualism and Heritage Language Maintenance

🕒 2:15pm - 3:15pm, Mar 18

📍 Individual Presentation

Please use the Whova desktop/web app and choose join in Zoom to view this session.

This presentation will explore service-learning as a tool for promoting biliteracy and language rights. As the linguistic landscape changes, communities face challenges when engaging minorities. Heritage languages are connected to identity, educational equity, and community engagement. Spanish Service-Learning courses develop strategies for language maintenance, establishing bridges of communication and collaboration between communities, minorities and universities. Through these connections increase college awareness, Latino's involvement in education, the arts, sports, and a stronger connection to the community.

🗣️ Speaker



Raquel Castro Assistant Professor, World Languages, Literatures, & Cultures, University of Arkansas

Undergraduate Research as Community Engagement Through Design Thinking

🕒 2:15pm - 3:15pm, Mar 18

📍 Individual Presentation

Design thinking is an approach to problem solving that focuses participants on the nature of a problem, experimentation, innovative solutions, and applications. It emphasizes ethnographic research, empathy, and understanding. This session will present the LAUNCH Cycle, a model for design thinking, and discuss how it can serve as the framework for research focusing on community engagement. The presenter will also share experiences applying the framework to an undergraduate research project on homelessness among LGBTQ+ youth.

🗣️ Speaker



Eddie Case Associate Professor of Education, Wingate University

Considerations for Conducting Needs Assessments to Improve Service-Learning Professional Development Opportunities

🕒 2:15pm - 3:15pm, Mar 18

📍 Individual Presentation

Results from faculty interviews and the exploration of service-learning artifacts will be presented in this session to offer instructional considerations for faculty development opportunities related to service-learning. This presentation will offer insights into structuring needs assessments to explore service-learning needs of a higher education institute. Participants will leave with a tool to help them structure a needs assessment to improve their faculty development and/or course offerings.

Speaker



Jill Stefaniak Assistant Professor, Learning, Design, and Technology, University of Georgia

Student-led Efforts to Combat Voter Suppression

🕒 2:15pm - 3:15pm, Mar 18

📍 Panel Discussion

Democracy works best when students' voices and votes are heard and counted. While college students turned out in record numbers in 2018, widespread voter suppression is undermining young people's ability to claim their rightful place in our democracy. Faced with onerous voter ID requirements, burdensome proof of residency requirements, polling site closures, and more, students nationwide are mobilizing in powerful ways to stem the tide of voter suppression and improve the health of our democracy.

Speakers



Jarvis Benson Program Manager, Andrew Goodman Foundation



Monica Clarke Alabama A&M University



Rachel Clay Southeast Regional Manager, Campus Vote Project



La Toria Lane Ambassador, Andrew Goodman Foundation, Tennessee State University

Institutionalizing Community Engagement through Faculty Development: A Cohort Model

🕒 2:15pm - 3:15pm, Mar 18

📍 Individual Presentation

This presentation focuses on institutionalizing community engagement across the campus and the curriculum. Rollins College has developed a robust community engagement program with the support of a faculty mentoring and advocacy cohort: the "Faculty Fellows." This professional development opportunity has fostered a healthy environment for faculty to evolve as community engaged scholars in partnership with our Center for Leadership & Community Engagement. Through this session, learn how to develop and sustain a faculty cohort model for your campus.

Speakers



Gabriel Barreneche Associate Dean, Rollins College - College of Liberal Arts



Meredith Hein Director of the Center for Leadership & Community Engagement, Rollins College

Owl Vision Grants: Mentorship and Mobilization through a Co-Educational Model

🕒 2:15pm - 3:15pm, Mar 18

📍 Panel Discussion

The Center for Civic Leadership at Rice University, in partnership with local organizations, leveraged our co-educational model to mobilize the civic capacities of students towards issues at the intersection of COVID-19, anti-racism, and the 2020 election cycle in the Greater Houston area. Highlighting the pipeline of peer mobilization and mentorship, a panel of students and alumni will share how they developed the necessary skills and civic awareness to respond to current challenges in our communities.

🗣️ Speakers



Jessica Khalaf Associate Director, Center for Civic Leadership, Rice University



Morgan Kinney Associate Director, Center for Civic Leadership, Rice University, Center for Civic Leadership

Democratically Engaged Assessment: Reimagining the Purposes and Practices of Assessment in Community Engagement

🕒 2:15pm - 3:15pm, Mar 18

📍 Interactive Workshop

Can assessment be empowering, not discouraging? meaningful, not perfunctory ... owned by participants in SLCE, not imposed ... transformative, not mundane? focused on our concerns about process and relationship, not only on impacts? This is how we in Imagining America are trying to reimagine assessment. This workshop will explore Democratically Engaged Assessment, which enacts the values of democratic engagement (e.g., full participation, co-creation, generativity), providing participants with new tools and frameworks for transformative assessment.

🗣️ Speakers



Joe Bandy Assistant Director, Center for Teaching, Vanderbilt University



Patti H. Clayton Practioner-Scholar & Consultant, PHC Ventures; IUPUI; UNCG

Where are all the guys? Male student engagement as a growing concern

🕒 2:15pm - 3:15pm, Mar 18

📍 Individual Presentation

At Elon's Kernodle Center, our student leader and volunteer population has long been made up of primarily

female leaders, which has caused us to ask, where are all the guys? In this presentation, data will be shared from an assessment project that sought to understand why and what more can be done to engage men in service. Participants will also be able to share best practices for engaging male identified students.

 **Speaker**



Kyle Anderson Assistant Director, Kernodle Center for Civic Life, Elon University

A Multi-level Partnership: Fostering Wholistic Engagement

🕒 2:15pm - 3:15pm, Mar 18

📍 Panel Discussion

The panel defines wholisitc engagement, dissects the challenges associated with creating wholistic engagement, and analyzes the advantages of surpassing those challenges. While wholisitc partnerships take time, developing slowly as relationships are built and trust is cultivated, a wholistic core is the foundation for lasting partnerships that withstand dynamic social, cultural, and economic environments. Florida International University and The City of Miami Beach sustain and scale education, transportation, environmental resilience, and culture/tourism partnerships.

 **Speakers**



Saif Ishoof Vice President of Community Engagement, Florida International University



Caryn Lavernia Assistant Vice President, Florida International University



Dr. Leslie Rosenfeld Chief Learning and Development Officer, City of Miami Beach



Jenesis Ramirez Program Manager, Florida International University



Tania Alonso

Revising Traditional Service-Learning Courses to Adopt a Critical Lens

🕒 2:15pm - 3:15pm, Mar 18

📍 Individual Presentation

I explore my processes for reworking service-learning courses to adopt a more critical lens. I have struggled to determine how to reframe as critical various traditional service-learning assignments I assign that benefit young people from all demographics and contribute to the various learning outcomes of my courses. To solve this problem, my shift toward critical service-learning takes two forms: 1) student-led recontextualization of traditional service-learning assignments; 2) development of new, more explicitly critical service-learning assignments.

 Speaker



Sonya Fritz Associate Professor of English, University of Central Arkansas

Making a Difference in the Lives of Individuals, Residents, Staff, and Nursing Students with Innovative Virtual Interaction during the Covid-19 Pandemic

🕒 2:15pm - 3:15pm, Mar 18

📍 Individual Presentation

The purpose of this presentation is to describe the effects and impact of a virtual interaction program on social isolation and social distancing experienced during the coronavirus pandemic by the individuals/residents, and staff members of a community special needs residential facility. Student nurses were able to enhance the essential nursing skills such as therapeutic communication and active listening needed to develop their ability to provide education to the individuals/residents.

 Speakers



Latasha Gooden Senior Nursing Instructor, University of South Carolina - Upstate



Lindsay Grainger Nursing Instructor, USC Upstate



Sarah O'Regan Student Nurse, University of South Carolina Upstate



Danielle Wills Student Nurse, University of South Carolina Upstate

3:30pm

Navigating the Challenges of Developing an Advanced Service-Learning Mentoring Program

🕒 3:30pm - 4:30pm, Mar 18

📍 Individual Presentation

Service-learning mentoring is an advanced program developed to support critical outcomes. Based on a peer-to-peer mentoring model, experienced undergraduates mentor service-learners, supporting students and creating opportunities for deeper reflection. As a unique model of teaching and learning, this program goes against the grain of standard higher education practices. This presentation will discuss how we navigated the political and administrative difficulties while negotiating the implementation of this advanced service-learning mentoring program at a higher education institution.

 Speakers



Lauren Grenier Doctoral Candidate in Clinical Psychology, Suffolk University



Lynne-Marie Shea Graduate Student, Clinical Psychology PhD Student, Suffolk University

The Building of a University and Elementary School Science Partnership: An Exploration of Light, Color, and the Relationship among Energy, Wavelength and Frequency - A Fourth-Grade Challenge

🕒 3:30pm - 4:30pm, Mar 18

📍 Individual Presentation

Please use the Whova desktop/web app and choose 'join in Zoom' to view this session.

The American Chemical Society (ACS) Science Coaches Program provides the unique opportunity for professional chemists to work with teachers. The students benefiting from this program begin to develop a deeper understanding and appreciation for science, how science impacts their lives, and the skills needed to engage in the scientific method. This presentation details the development and implementation of a long-lasting symbiotic relationship and support network between institutions, and meaningful hands-on science experiences for the students.

Recommended articles:

<https://news.belmont.edu/garrett-hosts-field-trip-for-local-students/>

<https://cen.acs.org/acs-news/programs/AACTs-Science-Coaches-program-celebrates/98/i23>

📣 Speaker



Maria Danielle Garrett Associate Professor of Chemistry Education, Belmont University

Facilitating Student Leadership for Civic Engagement: Insights from a Four-Year Program

🕒 3:30pm - 4:30pm, Mar 18

📍 Interactive Workshop

The session introduces participants to a four-year program model designed to facilitate student success and leadership through civic engagement. We'll share goals, structure, and developmental frameworks of the Bonner Program, which engages 40-160 students at 65 institutions in a cohort-experience. Drawing on national data, we will share insights about program features (such as training, mentoring, and courses) that support diverse students to gain knowledge, skills, and commitments to being change makers.

📣 Speakers



Rachayita Shah Community-Engaged Scholarship Director, The Corella & Bertram F. Bonner Foundation



Arthur Tartee Alumni Network Manager, The Corella & Bertram F. Bonner Foundation



Creating Culturally Responsive Service-Learning Experiences

🕒 3:30pm - 4:30pm, Mar 18

📍 Individual Presentation

Participants will examine the opportunities and challenges in partnering with community-based organizations and explore strategies for ensuring service opportunities are rooted in social justice and developing students as learners and leaders through culturally responsive service-learning experiences. Join us for this interactive workshop to learn more about how to design projects that allow students to meet academic and civic outcomes while practicing engaged citizenry.

🗣️ Speakers



Amy Meuers CEO, National Youth Leadership Council



Michael Van Keulen Co-Founder and Executive Director, Open Path Resources

Understanding Faculty Motivation for Community-Engaged Teaching and Learning

🕒 3:30pm - 4:30pm, Mar 18

📍 Individual Presentation

Understanding faculty motivation for community engagement is an essential component for developing meaningful partnerships that foster healthy outcomes for our communities. University faculty play a central role in addressing community challenges within university-community partnerships. Thus, fostering faculty motivation for community-engaged work is crucial. A review and exploration of strategies that influence faculty motivation for community engagement and approaches to supporting faculty efforts will be presented.

🗣️ Speaker



Dustin Krein Program Planner (Office of Community Engagement & Partnerships), University of South Florida

Building Community: The Importance of Presence in Community Engagement

🕒 3:30pm - 4:30pm, Mar 18

📍 Panel Discussion

This panel is comprised of four different community actors: a college student, a community member, a pastor, and a professor who are working together on a written project that explores the importance of presence when engaging in community development. Centering around experiences working with The Church of the Reconciler, a church for, and with, the homeless of Birmingham, Alabama, this panel explores how relationship building is key for the creation of a healthy community.

🗣️ Speakers



Keely Sutton Assistant Professor of Religion, Birmingham-Southern College



Adam Burns Pastor, Church of the Reconciler UMC



David Peterson Member, Church of the Reconciler



Emma Palmer Student, Birmingham-Southern College

Using Deliberative Dialogue to Listen, Learn, and Break Through the Partisan Gridlock

🕒 3:30pm - 4:30pm, Mar 18

📍 Interactive Workshop

Join us for a highly participatory workshop where you will learn how to address big social challenges using skills like active listening and respectful disagreement. In this workshop, we will use the National Issues Forums Institute issue guide "A House Divided", which asks: What would we have to give up to get the political system we want? You will leave with skills and concrete tools to help bring deliberative dialogue to your campus.

🗣️ Speaker



Christy Stanker Senior Program Manager, Up to Us (Net Impact)

Student Engagement & Service-Learning in the Times of COVID-19 and a Global Pandemic: Presenting a Student Health Ambassador Program

🕒 3:30pm - 4:30pm, Mar 18

📍 Individual Presentation

Manifesting as a global pandemic, COVID-19 brought with it many challenges for communities, economies, and campuses. Western Carolina University, through a grant with 5 other institutions across WNC, an army of student health ambassadors were hired, trained, and deployed across 6 campuses to help inform students, positively reinforce healthy COVID-19 practices, and be a positive example by peers. This session discusses what was done, what was learned, and what can continue beyond a global pandemic.

🗣️ Speakers



Lane Perry Executive Director - Center for Community Engagement and Service Learning, Western Carolina University



Daniel T Student & Student Leader, Western Carolina University



Brian Garland Operations Coordinator, Center for Community Engagement and Service Learning, Western Carolina University

Philanthropy and Pandemics: Navigating Experiential Philanthropy During COVID-19

🕒 3:30pm - 4:30pm, Mar 18

📍 Individual Presentation

This session will highlight significant learning moments while navigating an experiential philanthropy course, virtual student development, and the COVID-19 pandemic. Strategic Philanthropy has a solid history of addressing community needs, but reimagining and rebuilding our "new normal" in a virtual world provided opportunities for growth and learning. Through this session, participants will learn about ways to engage students and community members even through challenging circumstances.

🗣️ Speaker



Kyle Gammenthaler Lecturer and Manager for Societal Impact Programming, Texas A&M University - Mays Business School

"ENGAGE-ing" with the Data: Lessons Learned from a Five-Year Community-based Engaged Learning Project

🕒 3:30pm - 4:30pm, Mar 18

📍 Interactive Workshop

Georgia College's recent Quality Enhancement Plan, ENGAGE, focused on Community-based Engaged Learning. This five-year plan will be shared from creation through implementation and findings. Utilizing five years of data, results of impact on student behaviors and attitudes will be explored. Data includes student surveys, learning outcomes, and community partner feedback. Participants will engage in discussion of findings, implementation, a nonprofit seminar case study, their own experiences, lessons learned and specific actions to take back home.

🗣️ Speakers



Kelley Ditzel Assistant Professor, Government & Sociology, Georgia College & State University



Andrea Barra Associate Director of Assessment, Emory University

Using Place-based and Service-Learning to Advance Public Health Education in International Settings

🕒 3:30pm - 4:30pm, Mar 18

📍 Panel Discussion

This interactive session will describe how the University of Alabama at Birmingham has involved students in an international place-based, service-learning course that provided students with opportunities for developing skills, knowledge, and practices of community-engaged public health professionals. Presenters will discuss strategies for service learning integration in education abroad courses and the challenges and successes of offering place-based courses in public health that incorporate service-learning opportunities.

🗣️ Speakers



Lisa McCormick Associate Professor, Department of Environmental Health Sciences / Associate Dean for Public Health Practice, University of Alabama at Birmingham



Meena Nabavi Program Manager, University of Alabama at Birmingham School of Public Health



Ashley Neyer Director, Office of Education Abroad, University of Alabama at Birmingham



Matt Fifolt Assistant Professor, University of Alabama at Birmingham

Re-envisioning affective impacts of health related service during pandemic response

🕒 3:30pm - 4:30pm, Mar 18

📍 Panel Discussion

COVID-19 has pushed us into deeper reflection and encouraged reconsideration and reconstruction of our approaches to service learning. In this panel, a director of service learning will coordinate discussion amongst three faculty panelists regarding the affective side of health-related service, including students' care for others as well self-care, as these elements converge in fostering healthy individuals and communities. Seeking a collaborative format for this session, we will invite discussion via text chat and open conversation.

🗣️ Speakers



David Marlow Professor of Linguistics; Director, Service Learning & Community Engagement, University of South Carolina Upstate



Lindsay Grainger Nursing Instructor, USC Upstate



Toshua Kennedy, PhD, MPH, PHCNS-BC Director of RN-BSN Track and Graduate Programs, University of South Carolina Upstate



Ginny Webb USC Upstate

Powered By **Whova**

2021 Gulf-South Summit Poster Presentations

The Translation of Inclusion, Accessibility, Acceptance, and Empathy with Online Community Engagement

This study examines changes in students' perception of their learning in service-learning classes in the Spring 2020 semester. Service-learning at VCU are credit-based courses in which students participate in organized service activities, meeting community-identified needs. The Service-Learning Impact Measure (SLIM) survey is offered to all service-learning students to assess the aforementioned perceptions of learning semesterly. The traditional nature of these courses includes at least some face-to-face learning and service components. This was interrupted by the COVID-19 pandemic, forcing a sudden transition to fully online learning reflected in the Spring 2020 SLIM assessment, focused on studying impacts on student perceptions of inclusion/acceptance, empathy, and accessibility. We employed a comparative mixed methods study utilizing the data from the VCU SLIM surveys. Thematic and statistical analyses were used to compare Fall 2019 and Spring 2020 SLIM responses. Results indicate that during the pandemic, students felt less supported overall than in pre-COVID semesters, but also reported higher levels of social activism and growth of character.

Presenters:

Jessie Feng

Undergraduate Student
Virginia Commonwealth University

Katie Elliott

Associate Director, Office of Service-Learning
Virginia Commonwealth University

Amanda Hall

Director of community-engaged research and special projects
Virginia Commonwealth University

Learning with Purpose: Incorporating a Community-Based Project into an Honors Political Science Course

This poster presentation will provide a guide for instructors seeking to incorporate a community-based project into their curriculum. It will examine the Spring 2021 Honors Political Science course in which course students select one or more civic engagement projects to complete during the semester. With the instructor's guidance, students will design the poster describing how they chose the activity, the status of the project, and how it has enhanced their learning.

Presenters:

Leigh Nanney Hersey

Assistant Professor, Political Science
University of Louisiana Monroe

Caitlyn Cullen

Political Science Student
University of Louisiana Monroe

Dharmendra Sharma

Student
University of Louisiana Monroe

Arabella Jennings

Student
University of Louisiana Monroe

Cameron Adams

Student
University of Louisiana Monroe

State Municipal Associations as Intermediaries in Service-Learning

This poster describes how state municipal associations help connect universities with city governments for service-learning projects. Framed by our theoretical understanding of collaborative governance, the poster presents survey data and case examples to illustrate how state municipal associations can aid universities and city governments in the development of sustainable partnerships.

Presenters:

Eric Zeemering

Associate Professor & MPA Director
University of Georgia

Read2Succeed: Combatting the "COVID Slide" through a Community-University Literacy Initiative

Far too many students lack access to resources that can support the transition of learning how to read to reading to learn. Over the past five years, Mercer University has addressed access gaps by providing tutors for Read2Succeed, a K-3 literacy program led by the Read United initiative of the United Way of Central Georgia. This poster presentation describes the community-university partnership and highlights Read2Succeed's transition to a virtual tutoring program during the COVID-19 pandemic.

Presenters:

Lauren Shinholster

Coordinator of Community Engagement
Mercer University Center for Community Engagement

Shelton Land

Vice President, Education
United Way of Central Georgia

Using Service-Learning to Increase Financial Confidence and Knowledge: A Collaborative Consultation

Approach

Students enrolled in a personal finance course at the University of Central Arkansas conducted a financial education workshop for local community members in conjunction with a local nonprofit organization during fall 2019. Pre-workshop, over 40% of attendees lacked existing knowledge on financial topics including credit scores, credit reports, and debt repayment. Post-workshop, attendees indicated increased financial confidence and financial knowledge.

Presenters:

Kathryn Carroll

Assistant Professor, Department of Nutrition and Family
Sciences
University of Central Arkansas

Alexi Toles

Research Graduate Assistant
University of Central Arkansas

Virtual International Service Learning: Pursuing equity and engendering empathy through the Net

Service learning programmatically pursues equity for disenfranchised populations and seeks to engender empathy in students offering service. Facing the loss of this powerful pedagogical mechanism in 2020 was devastating. This project will explore a pilot implementation of virtual international service learning that seeks to create opportunity out of necessity, enabling students to gain practical experience with individuals in other countries safely over thousands of miles via the internet.

Presenters:

Caroline Cooley

Spanish Education Student
University of South Carolina Upstate

Building a Peer Mentorship Program: Race, Community, and Restorative Practices

This poster highlights the Peer Mentorship Program through the Office of Community-Based Learning at Washington and Lee University. This poster outlines five phases of our peer-mentorship training: 1) conceptualization; 2) research; 3) peer mentorship training; 4) discussion based course work led by peer mentors; 5) assessment to gauge peer mentors' resulting academic trajectory, involvement in the community, and future civic engagement.

Presenters:

Sascha Goluboff

Director of Community-Based Learning, Professor of
Cultural Anthropology
Washington and Lee University

Jayne Reino

Visiting Professor in Romance Languages and a Faculty
Liaison
Washington and Lee University

Impacting the Community through Service

UHD's Center for Community Engagement and Service Learning (CCESL) enables low-resourced students to access paid internship opportunities through the Community Work Study and Internship Program using federal and private funding. Students are placed to serve at assorted nonprofit organizations across the Houston-metro area.

Presenters:

Brandt Wild

Student
University of Houston-Downtown

Gladys Chan

Undergraduate Student
University of Houston Downtown

Tooba Narejo

Undergraduate Student, Honors
Student/ Intern at Citizens
Environmental Coalition- UHD
CCESL
University of Houston-Downtown

(Re)Building Reading Practices Through Community-Based Partnerships

"Reading Matters" is a community-based transformational learning class and outreach program that seeks to combat illiteracy by creating a chance for students (of all ages) to "fall back in love" with reading through the power of reading mentorship and reading choice. University students partner with community centers, schools, and programs in order to mentor at-risk children in reading while also assisting in building home libraries for their "reading buddies."

Presenters:

Jennie Ziegler

Writing Instructor
The University of North Florida

Experiences of UHD Student Interns at Mi Familia Vota

Serving communities is an imperative for universities. The University of Houston-Downtown engages with surrounding communities by providing needed services, and faculty, staff and students contribute to the service. Mi Familia Vota has been a partner with UHD for some time. The organization is involved in improving civic, social, and economic aspects of the residents' lives. Two UHD students served as interns at Mi Familia Vota in the summer and fall semesters, and describe their experiences.

Presenters:

Karem Maldonado

Community Engagement Intern at
Mi Familia Vota
University of Houston-Downtown

Karina Lopez

Undergraduate Student
University of Houston Downtown

Angie Razo

Texas State Director
Mi Familia Vota (My Family Votes)

Foodshed UGA: Topical, Interdisciplinary Engagement of Campus and Community through Food Issues

The intertwined issues of what we eat, who eats it, how we produce it, and what is wasted have major implications for community sustainability and health, and also provide a novel opportunity to engage the community through curriculum. This poster highlights the creation, content developed, courses and partners, service-learning activities, outcomes, and lessons learned prior to and during COVID-19 from a budding multidisciplinary initiative at the University of Georgia, "Foodshed UGA."

Presenters:

Whitney Barr

Graduate Research Assistant, MLA Student
University of Georgia

Andie Bisceglia

Campus Kitchen Program Coordinator
University of Georgia

Contemplative Practices to Enhance Learning Effectiveness

This project involves data analysis using various analytical and statistical models. UHD students in the data mining course collected EEG data from the Lab and applied machine-learning algorithms to build brain state models that can be used in the study of human-machine interaction. This gives students experience in solving real world problems in course work. Students also summarized the experimental results and presented the service learning experience at various events.

Presenters:

Hong Lin

Professor of Computer Science
University of Houston-Downtown

Individual Strategies and Institutional Supports: Learning from Long-Term Community Partnerships at Warren Wilson College

Presenters will share key components of their community engagement work, highlighting the evolution of long-term partnerships and the incorporation of community partner voices. Examples include courses in psychology, global studies, and social work, as well as a multi-course partnership between the college and the Swannanoa Correctional Center for Women.

Presenters:

Sarah Ann Himmelheber

Professor of Social Work
Warren Wilson College

Jen Mozolic

Psychology Professor
Warren Wilson College

Promoting Empowerment and Civic Engagement through Service-Learning in an Online Nursing Course

Service-learning is largely limited to face-to-face classes. This presentation describes how service-learning promoted civic responsibility and empowered nurses in an online RN-BSN class. Students were surprised by their ability to address the needs of the community beyond their current roles, which broadened their view of their influence as a nurse and the profession as a whole. It is hoped that other educators will use this as a springboard to benefit online students of all disciplines

Presenters:

Maryanne Sandberg

Assistant Professor of Nursing
College of Coastal Georgia

Connecting Nursing Students and Older Adults: An Intergenerational Service-Learning Experience

The increase in percentage of older adults worldwide drives the significant need for nurses to work with this demographic. A quality improvement project integrated an intergenerational service learning experience into an older adult nursing course to study the impact on attitudes toward the population. It was found that a service learning intervention utilizing healthy community-dwelling older adults can improve students' attitudes toward older adults.

Presenters:

Lori Murray

University of Arkansas

Hilary Bowling

Online BSN Coordinator and Instructor
University of Arkansas - Fayetteville

GatorServe: Benefitting Communities in Houston

GatorServe is a University of Houston-Downtown tradition that brings together UHD students, staff, faculty, alum, friends, and community partners to complete service projects in neighboring communities on two federally recognized National Days of Service. By improving social determinants of health of a disenfranchised population, such as living conditions, volunteers have had a positive effect on health-related outcomes of various communities in the greater Houston, Texas area.

Presenters:

Caroline Smith

Assistant Director
University of Houston Downtown - Center for Community Engagement & Service Learning

Community Partnerships to Improve Wellbeing

The Center for Health and Wellbeing (CHWB) is a non-profit that focuses their work around seven dimensions of wellbeing: physical, emotional, spiritual, intellectual, environmental, vocational/occupational, and social. These efforts align closely with Rollins' efforts to educate students to lead meaningful lives and have productive careers. This presentation will describe our collaboration and emphasize best practices for developing community/university partnerships.

Presenters:

Anne Stone

Associate Professor, Department of Communication and
Program Director for the major in Social Innovation
Rollins College

Sara Wright

Wellbeing Guide
Center for Health & Wellbeing

Impact of Interprofessional Service-Learning Strategies on Knowledge Integration

The goal of this study is to inform the teaching of undergraduate content in Family & Consumer Sciences (FCS) by determining classroom strategies tied to student success measuring concepts in nutrition, interior design, and FCS education. Forty students collaborated on a theme meal at a senior center. Knowledge content was measured using assessment questions and the final project rubric. Comparison of scores with previous terms showed higher levels of knowledge integration.

Presenters:

Nina Roofe

Associate Professor and Chair of the Department of Family and Consumer Sciences
University of Central Arkansas

Service Learning and Its Benefits to UHD and Its Students

The significant involvement of students taking on strategic community challenges through A+CE (Academic Achievement through Community Engagement) and Service Learning designated courses contributes to students' feeling of inclusion, enhances empathy, and increases critical thinking skills as well as awareness of social issues and developing an understanding of society. Their various modes of reflection demonstrate their curiosity, intelligent, and critical thinking.

Presenters:

Zeenat Mitha

Lecturer in Communication
University of Houston-Downtown

Evaluating and Enriching Reading Tutoring Conducted by Undergraduates within Local Elementary Schools

This research project sought to enhance a tutoring partnership between one private university and one school system. This project allows undergraduates to help make positive impacts in the lives of local elementary students and the local community. Special attention was given to the correlation between reading competencies and impacts on social and emotional learning. Results, improvements that were made, and information on further research will be discussed in this poster session.

Presenters:

Vicki Luther

Associate Professor
Mercer University

Marlee Nichelson

Undergraduate Student
Mercer University

Alaicha Penamon

Undergraduate Student
Mercer University

Leading An International Service-Learning Project As An Undergraduate

Since 2007, Mercer University has sent undergraduates and faculty around the world on international service learning trips. In 2019, with the support of community members in South Africa, existing Mercer on Mission resources, Mercer's Computer Science department, and undergraduate student leadership; a new project was created. This poster details the creation of the program and attempts to answer how and why such a uniquely student-driven program was successful.

Presenters:

William Darragh

Senior Computer Science Major
Mercer University

Harrison Verhine

Industrial Engineering and Math
Double Major
Mercer University

Bob Allen

Professor and Chair of Computer
Science
Mercer University

From a prison to the classroom: breaking barriers for a campus-wide social change through service-learning

Service-learning enables students to apply learning objectives to address community needs while developing their sense of civic responsibility for social issues. We will present innovative methods to connect curriculum to community needs. Examples include connecting students of: non-majors biology to climate change, criminal justice and social work to mass incarceration, public health to environmental justice, and molecular diagnostics to educational equity.

Presenters:

Samiksha Raut

Associate Professor of Biology
University of Alabama, Birmingham

Ana Oliveira

Research Associate
University of Alabama at Birmingham

Amy Chatham

Director Service Learning and Undergraduate Research
The University of Alabama at Birmingham

Martha Earwood

Assistant Professor, Department of Criminal Justice
University of Alabama Birmingham

Mutual Dialogue, Community Based Participative Research with Women's Groups In Peru

With partners in Peru helping a coastal women's group and another Amazonian group displaced in Lima define their goals, our volunteers were among them during a short summer service trip helping to build their capacity. In a town without regular waste management, travelers assisted in the goal of knowledge-sharing and creating a cleaner area. The other group is currently being assisted with marketing amidst the challenges of the pandemic through long-distance communication and relationships.

Presenters:

Monica Hernandez

Adjunct English Professor
University of the Incarnate Word

Yesenia Alcala

PhD Student, Dreeben School of Education
University of the Incarnate Word

Sr. Martha Ann Kirk

Religious Studies, Ettling Center for Civic Leadership and
Sustainability
University of the Incarnate Word

Yesenia Caloca

Assistant Director, Ettling Center for Civic Leadership and
Sustainability
University of the Incarnate Word

Seeking to Serve: Perspectives on meeting community needs through design, nursing, and women's & gender studies

This presentation brings together faculty from across our regional comprehensive university and showcases ways each has sought partnership with our local and global communities. Presenters include first timers to old hands. We hope that blending freshness of perspective with experienced observation and attendee participation will yield meaningful learning outcomes for all. Seeking a collaborative format for this session, we will invite discussion via text chat and open conversation.

Presenters:

David Marlow

Professor of Linguistics; Director, Service Learning &
Community Engagement
University of South Carolina Upstate

Matthew Donaldson

Associate Professor, Graphic Design
University of South Carolina Upstate

Stephanie Barnhill

Assistant Professor of Nursing
USC Upstate

Esther Godfrey

Professor, Nineteenth-Century British Literature
University of South Carolina Upstate

When a Global Pandemic Prompts Service-Learning Plans to be Reconsidered

This presentation will share how COVID-19 impacted the Service-Learning project plans of four participants enrolled in a voluntary Service-Learning faculty development course led by the primary presenter. Presenters will recount how they had to re-consider, revise, re-imagine, and/or even pause their Service-Learning plans in response to unexpected obstacles and opportunities resulting from a global pandemic.

Presenters:

Sarah Straub

Asst. Professor Education Studies
Stephen F. Austin State University

Amber Wagon

Asst. Professor Education Studies
Stephen F. Austin State University

Lauren Burrow

Assoc. Professor Elementary Ed
Stephen F Austin State University

Heather Beal

Professor, Education Studies
Stephen F. Austin State University

Maggie Leysath

Assistant Professor, School of Art
Stephen F. Austin State University

Expanding Civic Engagement with Virtual Platforms

This presentation features five Women scholars from SFASU. As Engaged Scholars, they continuously respond to the needs of their local community by volunteering their time and expertise to offer various programs that focus on creative arts and/or academic assistance for K-12 students. They will share opportunities and obstacles of using virtual platforms, during the 2020 global pandemic, to re-envision their civic responsibilities to engage communities beyond their previous place-based programs.

Presenters:

Lauren Burrow

Assoc. Professor Elementary Ed
Stephen F Austin State University

CC Conn

Stephen F Austin State University

Chrissy Cross

Associate Professor, Education
Studies
Stephen F. Austin State University

Creating a Healthy Climate for Politics in the Classroom

Faculty and staff will learn how to create a healthy climate for politics in the classroom. First, we provide resources to civically engage with students in ways not limited to voting, ensuring that everyone in the classroom can participate in democratic practices. Second, we provide resources to help build faculty and staff confidence in civility/dialogue concerning politics in the classroom. The goal of this poster is to reframe civic engagement beyond elections in the classroom.

View the PDF's links at: <https://www.docdroid.net/ocSfCTV/ceep-gulf-south-summit-layout-1-pdf>

Presenters:

Rachael Houston

Campus Election Engagement
Project's Faculty Resources
Coordinator
University of Minnesota

Lauren Ban

Campus Election Engagement
Project

Erika Tai

Faculty Resources Intern
Campus Election Engagement
Project

Mentoring in Dietetics: A Community-Based Partnership

The reality is that mentoring and leadership development programs are essential during one's academic career and in development as a practicing professional. Community-based experiential learning programs can be professional educational experiences for dietetics students (DS), dietetic interns and registered dietitian nutritionists (RDNs). The program tools and outcomes of a novel project-based mentoring model between RDNs and DS will be presented.

Presenters:

Kristen Hicks-Roof

Assistant Professor
University of North Florida

Karen Beathard

PhD Candidate, Senior Lecturer / Didactic Program
Director
Texas A&M University

Developing Community-Specific LGBTQ+ Cultural Competency Training Programs

LGBTQ+ students are more likely to experience mental health issues than their heterosexual and cisgender peers, often because they lack an affirming community. Rainbow Connection is a student-developed program that provides faculty and staff with tools to create an affirming environment for LGBTQ+ students. This presentation looks at issues affecting LGBTQ+ students, developing a curriculum framework tailored to their environment, evaluating material for relevance and accuracy, and more.

Presenters:

McPherson Newell

Rainbow Connection Committee Co-Chair, Research
Assistant, Engineering for Development
Mercer University

Sanaa Yusuf

Rainbow Connection Committee Co-Chair
Mercer University

Creating a Culture of Service: How to spark connections between campus and community partners

This session explores how the School of Human Sciences has created a culture of service learning through co-curricular innovations, community partnerships and student centered civic engagement, and also how these programs identified potential partners, how the partnerships developed and the evaluation process. We focus on how to spark connections in communities and understand the opportunities and challenges created by offering this type of civic engagement in a classroom setting.

Presenters:

Chay Runnels

Professor
Stephen F. Austin State University

Jill Pruett

Clinical Instructor
Stephen F. Austin State University

Nathaniel Walker

Assistant Professor
Stephen F. Austin State University

Gina Causin

Associate Professor
Stephen F. Austin State University

Service Learning and Catholic Social Justice Pedagogy: The Value of Centering the Caring for God's Creation in the Freshman Composition Classroom

In a composition course focused on Transcendentalism at the University of the Incarnate Word, students volunteer at the only nature sanctuary in San Antonio, the Headwaters. The Headwaters is an Earth Care ministry of the Sisters of Charity, UIW's founding order. During and after their volunteer work, students reflect on the experience and the way it influences their reading and writing as well as their connections to each other, the university, and the global world.

Presenters:

LuElla D'Amico

Associate Professor of English
University of the Incarnate Word

REbuilding Online: Online Service-Learning, Student Engagement, and Community Connections

This presentation focuses on the community-university partnerships built within my online Composition I course. I will share IRB-approved survey findings from my Fall 2020 Online courses and show how my students benefitted from service-learning as they helped a healthy and inclusive community through democratic practices and community-engaged scholarship. I'll also share best practices for encouraging student leadership for civic engagement, even with the challenges of an online service-learning courses during a pandemic.

Presenters:

Mary McGinnis

Assistant Professor of English
College of Coastal Georgia

Building Democratic Skills in a Virtual Environment

The last year has compelled civic engagement programs to adapt their practices to continue to serve their communities. While physical contact has posed many challenges, the need for human interaction and connection has proved to be more important than ever. In this session participants will hear how Troy University student leaders transitioned their youth citizen summer camp and campus conversations to virtual platforms to engage both groups of stakeholders and encourage active citizenship.

Presenters:

Lauren Cochran

Coordinator, Office of Civic
Engagement
Troy University

Chauntina Whittle

David Mathews Center for Civic
Life JOIP Intern
Troy University

Kourtney Frye

Graduate Assistant, Office of Civic
Engagement
Troy University

Building Healthy Communities, One University Student at a Time

Increasingly, community partnerships are fostering healthy environments where students and their families live, play, and work. Providing a quality education is one essential avenue for ensuring children will thrive and succeed. In a community after-school literacy program, education faculty members encourage university pre-program education students to expend their service learning hours providing reading and writing support for K-5 children within the children's mobile park community.

Presenters:

Annmarie Jackson

Assistant Professor
University of North Georgia

Romola Bernard

Assistant Professor, Middle
Grades, Secondary & Science
Education
University of North Georgia

Cristina Washell

College of Education Department
Head
University of North Georgia

The University of Alabama's Student Community Engagement Center

The mission of the University of Alabama's Student Community Engagement Center is to engage students and community partners in mutually beneficial partnerships to identify and address critical community opportunities. Come learn about our approach to developing students as community leaders by facilitating synergy and transdisciplinary collaboration across departments in order to improve the quality of life for individuals and communities through community- and research-based approaches.

Presenters:

Andrew Pearl

Director of Community Engagement Research and Publications
University of Alabama

Building a University-community partnership to support kinship families amid COVID

Using the principles of collective impact in concert with public interest technology (PIT), the team will be presenting on a community-university partnership to support kinship and grandfamilies mental, physical, and social wellbeing. We will describe the partnership that has been built upon the principles of full participation and asset-based development, all while managing the impact of and responding to the opportunities to address health inequities exacerbated by COVID-19.

Presenters:

Sarah Stanlick

Global School Faculty Member
Worcester Polytechnic Institute

Maya Angeles

Undergraduate Student
Worcester Polytechnic Institute

Jacquelyn Lopez

Undergraduate Student
Worcester Polytechnic Institute

Intro Ethics and Housing Insecurity - The Daybreak Project

In Spring 2019, 65 students in 2 sections of Intro to Ethics designed, implemented, and reported on 18 different service learning projects with the Daybreak Center, a day shelter and resource center for people experiencing housing insecurity in Middle Georgia. The service continued throughout 2019, but pivoted to indirect service when the pandemic hit. In this presentation, we will talk about the course, its impacts, and how we adapted to meet the challenges of teaching in the age of COVID-19.

Presenters:

Charlotte Thomas

Professor of Philosophy and Great Books
Mercer University

Launching an Initiative on Service Learning During COVID-19

We present an overview of the early stages of developing a center for community engagement and experiential learning at a rural Appalachian public liberal arts college, The University of Virginia's College at Wise. While COVID-19 made the process more challenging, multiple successes propelled the initiative forward. In addition to garnering faculty, community partner, and student buy-in, we describe the ways in which our multi-stage efforts have produced a collaborative and engaged network.

Presenters:

Heather Evans

John Morton Beaty Endowed Chair in Political Science
The University of Virginia's College at Wise

Christa Moore

Assistant Professor of Sociology
UVA Wise Department of Social Sciences

World Languages and Service to the Community: Practice and Research at the Undergraduate Level

This session explores the current work and research of two faculty members at Stephen F. Austin State university situated at the intersection of service-learning and world languages. Their work examines how university students' development of cultural competence, well-being, and proficiency in another language may be supported by engaging in community-based service. We encourage participant dialogue and recommendations for practice.

Presenters:

William Davis

Visiting Assistant Professor of Education Studies
Stephen F. Austin State University

Mario Morera

Associate Professor of Spanish
Stephen F. Austin State University

Coming to the Table: Breaking Down Walls and Advancing Interfaith Understanding

Details of classroom community engaged scholarship that provided students opportunities to dialogue and deliberate about how to build bridges and not walls when it comes to understanding each other's religions will be shared. As a result of the project, understanding among Christians and Muslims was strengthened and members of their communities were empowered to disrupt/dismantle discrimination about each other's religions, faith, or spirituality as a result of their experiences.

Presenters:

Sandy Guzman-Foster

Associate Professor
University of the Incarnate Word

Engaging Students in the Preparation to Reopen the University Community During a Pandemic

The university task force charged with developing strategies for reopening Fall 2020, enlisted a committee consisting of faculty and administrators from departments across campus to determine the occupancy load for socially distancing classrooms per CDC requirements. Interior design faculty volunteered student interns to assist in space planning all classrooms and labs on campus. This poster aims to explain the processes students undertook to develop design solutions for each department.

Presenters:

Nathaniel Walker

Assistant Professor
Stephen F. Austin State University

Leisha Bridwell

Associate Professor, Human
Sciences
Stephen F. Austin State University

Sally Ann Swearingen

Associate Professor
Stephen F. Austin State University

Why Faculty Stop Using Service-Learning Pedagogy

This presentation explores the reasons faculty stop utilizing service-learning pedagogy. Twenty-one faculty participated in the study. The time demands of teaching service-learning courses and the challenges of interacting with community partners were primary reasons for discontinuing teaching service-learning classes. Some faculty discontinued because they no longer taught a course that lent itself to service-learning pedagogy. Implications of the study will be discussed.

Presenters:

Alexa Darby

Professor of Psychology
Elon University

Lauren Willingham

Undergraduate Research Student
Elon University

Tammy Cobb

Associate Director of the Kernodle
Center for Service Learning and
Community Engagement
Elon University

Working with a Community Partner to Develop a Collaborative Service Learning Project

This presentation explores the development of a collaborative service-learning project where students create bulletin boards for the local Boys & Girls Club and provide a blueprint for people desiring to implement similar projects. This course assignment incorporates both collaborative learning and service learning into a single class project. We will also explore how to increase student understanding with writing assignments and community speakers strategically placed throughout the semester.

Presenters:

Rachel Jumper

Assistant Professor
Stephen F. Austin State University

Photos: Empowering Women from Churches to Promote HEAL (Healthy Eating and Active Living)

The primary presenter, a nursing professor and member of a Healthy Eating and Active Living (HEAL) coalition, conducted research to illuminate previous HEAL survey results that depicted concerns and priorities of church congregations. The primary presenter will discuss methods, data analysis, and the "Practical Living" model. Co-presenters will describe their perspectives of taking HEAL photos, creating banners, and compiling a "Practical Living" booklet that promotes HEAL in the community.

Presenters:

Lynette Gibson

Professor and Director of Research
in Nursing
University of South Carolina
Upstate

Jervelle Fort

Health Educator
South Carolina Department of
Health and Environmental Control

Mamie Reid

Chair, LiveWell Greenville At
Worship Workgroup Ministry Team
Leader
Shady Grove Baptist Church

Giving Them Credit: Building a Data-Driven Financial Literacy Peer-Education Program on the South Side of San Antonio

The south side of San Antonio where Texas A&M University-San Antonio stands has a poverty rate of 18.6%-23.1%, compared to the national average of 11.8%. When creating a financial wellness program to serve the community and campus, it is critical to take community demographics into account. This presentation details how we built this peer-led, data-driven financial program and what other intentional practices we applied for a healthier community, and how you can, too.

Presenters:

Elias McCullen

Coordinator for Programs and Partnerships
Texas A&M University-San Antonio

Service Learning or Leadership Development: A Win-Win Impact

Service to others can help to development leadership. For STEM majors, the lesson of leadership is extremely important in developing intellectual capacity throughout their collegiate career. Research describing situational leadership development will be juxtaposed with leadership arising from service learning courses. Building leadership through "helping others" will be highlighted in this session as undergraduates learn teamwork and teach leadership to middle school-aged STEM students.

Presenters:

Mary Jo Parker

Executive Director –Scholars Academy/ Natural Science
Lecturer
University of Houston-Downtown

Mitsue Nakamura

Mathematics and Statistics Professor
University of Houston-Downtown

Building Wellness at the Foundational Level in College

In these times of uncertainty, college students face many challenges in all areas of wellness. Wellness encompasses multiple domains: intellectual, social, emotional, physical, occupational, and financial, as examples. Teaching the Wellness Wheel concept in higher education is one venue to (re)building wellness on campuses. This poster will visually depict the Wellness Wheel information and how to use it for instruction.

Presenters:

Sheri Grotrian

Professor of Business
Peru State College

"New Voters, Young Voters, Minorities...Oh My! Developing a Hyper-Local Democracy Coalition at Your Institution"

Curious on how to encourage democracy for diverse students in your university and community? Want to motivate students to express their voice in ways other than just national elections? Two undergraduate Democracy Fellows will lead a thoughtful discussion and in-depth analysis with campus and community partners, addressing the myriad ways on how to get civically engaged with diverse students and sharing ideas on establishing democracy at your university/community.

Presenters:

Denique Escobedo

Democracy Fellow
Texas A&M University- San Antonio

Elissa Gallegos

Democracy Fellow at Texas A&M-SA
Texas A&M University - San Antonio

Aaron Guerrero

Civic Engagement Coordinator
Texas A&M University

Nonprofit Connections: Bringing Campus and Community Together for Learning and Service

Session participants will see how a single event held each semester can serve multiple purposes including advocacy, networking, idea generation, volunteer and intern recruitment, etc. all while promoting service learning across campus. This session will provide concrete examples of how the event provides: impactful student learning experiences; a venue for community partners to network; opportunities for faculty to explore service learning partnerships; and a place where nonprofit organizations can advocate for their causes.

Presenters:

Kelly Rogers

Associate Professor for Health & Physical Education
Murray State University

Robin Esau

Instructor
Murray State University

Promoting Student Philanthropy and Social Entrepreneurship through Community-Based Learning

Through undergraduate community-based learning courses in international studies, psychology, and business the University of Louisville addresses equitable access to resources through engagement, leadership, social entrepreneurship, and philanthropic awards by students. In this interactive presentation, panelists will share best practices in community-based learning and help participants identify ways they can incorporate these practices in their own instruction.

Presenters:

Henry Cunningham

Director of Community Engagement
University of Louisville

Jenna Haugen

Asst. Prof of Management
University of Louisville

Lora Haynes

Associate Professor of Psychology
University of Louisville

The Chemistry of Service Learning

This presentation outlines our journey of how we integrated service learning into an upper level chemistry course at Birmingham-Southern College. We believe this strategy can be an adaptable model for other STEM courses and programs wishing to add a service learning experience into their own curriculum.

Faculty can agree that service-learning is an impactful pedagogical practice that allows students to apply course content in ways that can help their local communities. However, we believe that STEM faculty often find it challenging to see how service learning can be integrated into their curriculum. Often there is already a tenuous balance between covering the necessary course material, integrating meaningful lab experiences and keeping a steady pace to ensure effective student learning; and faculty struggle to see where service learning can be added without sacrificing course content. This presentation aims to provide examples and strategies (both those that worked well and those that didn't work well) of how the BSC Chemistry program integrated service learning into one of their senior level courses over the last 5 years. Additionally, we aim to demonstrate that the service learning experience not only enhances student learning of course material but also increases student motivations of learning in STEM and may potentially have a positive impact on students' critical thinking skills. We also hope to foster discussion with participants on potential ways they could see integrating more service learning into the sciences through either fostering citizen scientists in the K-12 system, discussions of ideas on how science and public health intersects, and considering how environment impacts communities and their health.

Presenters:

[Kate Hayden](#)

Assistant Professor of Chemistry
Birmingham-Southern College

The Woodycrest Commons Initiative: A Community for Teachers

Three years ago, the Nashville Civic Design Center, our Architecture School's "think tank" and 19-year partnership, urged us to conduct an outreach engagement and service-learning urban design study to focus advocacy for a "Teachers Village" in Metro Nashville.

These under-compensated "everyday heroes" have high turnover rates in staffing, as they are able to find lower costs of living outside the county, though unfortunately with lengthy commutes and estrangement from the local communities in which they teach.

Presenters:

[Thomas Davis](#)

Professor, College of Architecture + Design
University of Tennessee Knoxville