

A Regional Conference for the Southern United States

# Gulf-South SUMMIT

on Service-Learning and Civic Engagement  
through Higher Education

Hilton Hotel Oceanfront • Cocoa Beach, Florida  
April 6 - 8, 2005 (Wednesday - Friday)

Best Practices • Research • Networking • Knowledge



## CONFERENCE PROGRAM



Cocoa Beach, Florida



## FEATURED SPEAKERS



**MICHELLE DUNLAP** is an Associate Professor of Human Development at Connecticut College, where she has engaged her students in service-learning for more than 10 years. She has published a series of journal articles and a book titled *Reaching Out to Children and Families: Students Model Effective Community Service*, all on the adjustment processes of hundreds of her students as they engage in cross-cultural service-learning. She is a member of the distinguished Campus Compact/AAHE consulting corps consisting of faculty experts on service-learning. She is a reviewer for several service-learning and diversity issues journals, and is the book review editor of *Sex Roles: A Journal of Research*. Her work has taken her throughout the United States, Finland and Russia.

**PAUL ELSNER** served as Chancellor of the Maricopa Community College District in Arizona from 1977 until 1999. He received his doctorate from Stanford University in 1964 and graduated from Harvard's Institute for Educational Management. Throughout his career as professor and administrator, Dr. Elsner served in various capacities for organizations such as Educational Testing Service, American Association of Community Colleges, American Council on International Intercultural Education, League for Innovation, and Campus Compact. Among his many awards are the Anderson Medal for co-founding "The Think Tank," the AACC Community Colleges' Leadership Award, and the Harold W. McGraw, Jr. Prize in Education. *The Chronicle of Higher Education* and *Change Magazine* named him as one of the most influential college leaders of our time. His publications include articles, books, and even a morality play on the future of higher education. His current efforts to advance the cause of education have led him to speaking engagements on six continents. In his retirement, he is founder and president of the Sedona Conferences and Conversations, Paul Elsner and Associates, and Los Vientos, Inc.-organizations dedicated to worldwide education.



**KERRISSA HEFFERNAN** is the Associate Director of the Swearer Center for Public Service at Brown University and Director of the Royce Fellowship. Previously she was Senior Associate in Integrating Service with Academic Study at National Campus Compact and the Arnow-Weiler Professor of Liberal Arts at Lasell College, Director of the Center for Public Service and Director of the Donahue Institute for Values and Public Life. She is the co-editor of the *The Practice of Change: Concepts and Models for Service-Learning in Women's Studies*, co-editor of the Introduction to *Service-learning Toolkit: Readings and Resources for Faculty* and author of *The Fundamentals of Course Construction*.

**EDWARD ZLOTKOWSKI** is a Professor of English at Bentley College and the Senior Faculty Fellow at Campus Compact. Since 1995, he has also served as general editor of a currently 19 volume series exploring the relationship between service-learning and academic disciplines/disciplinary areas. Through the Compact, he has designed and facilitated professional development opportunities in service-learning for provosts and deans as well as a series of summer institutes for engaged academic departments. He has written and spoken extensively on a range of service-learning topics, and regularly uses service-learning in his own teaching. His most recent book is *Service-Learning and First-Year Experience: Preparing Students for Personal Success and Civic Responsibility*.



### GULF-SOUTH SUMMIT SPONSORS

- Auburn University
- Brevard Community College
- Broward Community College
- Campus Compact
- Community College National Center for Community Engagement
- Florida Campus Compact
- Florida Gulf Coast University
- Florida Institute of Technology
- GEAR UP MS at the Mississippi Institutions of Higher Learning
- Indian River Community College
- Louisiana State University
- Miami Dade College
- Mississippi Center for Community and Civic Engagement, University of Southern Mississippi
- Mississippi Commission for Volunteer Service
- New College of Florida
- Tulane University
- University of Central Florida
- Xavier University of Louisiana

### HOSTS



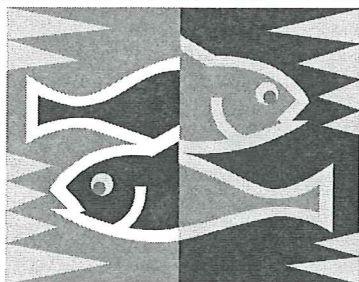
Florida | Campus Compact



# Thursday, April 7, 2005

## (A Potpourri of Fish) Summit Starts

---



7:30am - 5:00pm	Posters and Exhibits
7:30am - 8:30am	Continental Breakfast
8:00am - 5:00pm	Registration
8:30am - 9:30am	Master of Ceremony, Dee Dee Rasmussen, Executive Director, Florida Campus Compact <u>Welcome &amp; Introductory Remarks</u> , Thomas Gamble, President, Brevard Community College <u>Keynote: The Role of Higher Education: To Fish or Not to Fish</u> , Ed Zlotkowski, Professor of English, Bentley College
9:45am - 11:00am	1st Concurrent Session
11:00am - 12:00pm	Poster and Exhibit Presentations
12:00pm - 1:30pm	Lunch <u>Introductory Remarks</u> , Anthony Catanese, President, Florida Institute of Technology <u>Keynote: Multicultural Service-Learning</u> , Michelle Dunlap, Associate Professor of Human Development, Connecticut College <u>Awards</u> , Vincent Ilustre, Associate Director, Office of Service-Learning, Tulane University
2:00pm - 3:15pm	2nd Concurrent Session
3:15pm - 3:45pm	Break with refreshments
3:45pm - 5:00pm	3rd Concurrent Session
6:00pm - 6:15pm	Interest group appetizers
6:15pm - 7:15pm	Interest group roundtables <b>To sign up for a Roundtable Discussion Group or create your own group, visit the Roundtable Sign-Up Station, near the conference registration table!</b>
7:15pm	On your own: Dinner and Discourse



# Friday, April 8, 2005

## (The Release) The End of the Beginning

---



7:30am - 12:00pm

7:30am - 8:30am

7:30am - 9:00am

8:30am - 9:45am

10:00am - 11:15am

11:45am - 1:30pm

Posters and Exhibits

Continental Breakfast

Registration

4th Concurrent Session

5th Concurrent Session

Lunch

Introductory Remarks, Terry Hickey, Provost,  
University of Central Florida

Keynote: Civility and Civic Engagement, Paul Elsner,  
Chancellor Emeritus, Maricopa Community College  
District

Challenge, Kerri Heffernan, Associate Director,  
Swearer Center for Public Service

Scholarship Giveaways

2:00pm - 3:15pm

2:00pm - 4:30pm

6th Concurrent Session

Service-Learning Project: South Central Regional  
Wastewater System (SCRWS) at the Viera Wetlands

\*Scholarships to attend next year's Summit will be announced shortly after the conference. These two \$1,000 scholarships will be based upon specific criteria for workshop presentations determined by student judges.

A Taste of Florida

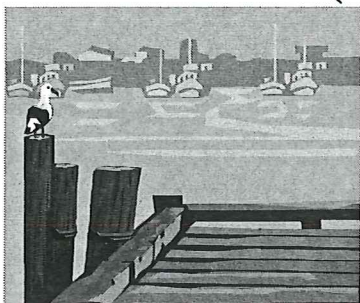
**Experience Brevard County's many delights!**  
**Peruse your Cocoa Beach Guide and Map which can be found in your welcome packet. There's lots to do in and around the Space Coast. Stop by the registration area for more information or assistance in arranging your Florida adventure.**



# **2005 GULF-SOUTH SUMMIT on Service-Learning and Civic Engagement through Higher Education**



**Wednesday, April 6, 2005  
Pre-Summit (On the Dock of the Bay)**



***7:30am - 5:00pm***

## ***Posters and Exhibits***

Posters will be displayed between 7:30am and 5:00pm. Poster presenters will be available to present their posters and answer any questions on Thursday between 11:00am and Noon.

**Location:** Throughout conference area

***10:00am - 7:00pm***

## ***Registration***

**Location:** Just off hotel lobby

***12:00 pm - 1:00pm***

## ***Light Lunch***

**Location:** Grand Ballroom



## ***1:00pm - 4:00pm      Pre-Summit Workshops***

---

### ***Service-Learning 101***

**Presenters:** Marsha Turner, Director of Service-Learning, Florida State University and Josh Young, Director, Center for Community Involvement, Miami Dade College.

**Abstract:** Learn from two institutions that have model service-learning programs. Gain insights from a broad overview of service-learning for all audiences... community partners, faculty, staff, and students. Learn what it takes to be successful regardless if you are just beginning or established. Explore the issues, strategies, challenges and components of service-learning program development! Ask any question and increase your knowledge of the key elements and roles in service-learning.

**Location:** **Dunes I and II**

---

### ***Course Construction***

**Presenter:** Kerri Heffernan, Associate Director, Swearer Center for Public Service, Brown University

**Abstract:** This presentation will draw upon an overview of over 900 service-learning syllabi and is designed to assist faculty in integrating service into an existing course or in constructing a new course using service-learning. Participants will examine disciplinary models for service-learning, the basics of service-learning course construction, review service-learning assignments and examine courses that focus on the civic capacities of service-learning. Participants are encouraged to bring syllabi and course materials.

**Location:** **Sea Oats**

---

### ***Service-Learning and the First Year Experience***

**Presenter:** Ed Zlotkowski, Professor of English, Bentley College

**Abstract:** Those who work in service-learning and in first-year programming share many similar concerns. And yet, it is rare that they work substantively together. In this workshop we will look at the ways in which Service-Learning and first-year programming could complement each other, leading to both great first-year student success and a more substantive student commitment to community engagement.

**Location:** **Sawgrass**

---



## ***Tour & Experience Brevard Community College's Center for Service-Learning***

**Presenters:** Brevard Community College's Center for Service-Learning

Take a literal not virtual tour of Brevard Community College's Center for Service-Learning. Meet faculty, staff, and students, examine the look and feel of a Service-Learning Office, grab stakeholder, program forms, and resources; experience the application, placement, and support processes, receive program packets and course materials to adapt to your needs. Get important materials and publications before other Summit participants do! BCC vans will provide transportation to the Melbourne Campus Center for Service-Learning. The vans will leave at 1:00pm and return at 4:00pm

**Location:** Meet in lobby of Hilton Hotel, shuttle service provided to BCC-Melbourne

***4:15pm -5:45pm***

---

### ***Introduction to K-12 Service-Learning***

**Presenter:** Joe Follman, Assistant Director, Florida Alliance for Student Service

**Abstract:** The Florida Learn & Serve program provides funds to support K-12 school-based service-learning. Approximately \$750,000 will be awarded for the 2005-06 school year, and this workshop will provide an introduction and overview of service-learning. Potential applicants will learn useful information about the kinds of activities that are supported by Florida Learn & Serve and are strongly encouraged to attend. The session will define service-learning, provide examples of service-learning projects, and offer information on how to apply. (Applications are due May 16, 2005.)

**Location:** Dunes I and II

---

***6:30pm – 8:30pm***

***Welcome Reception***

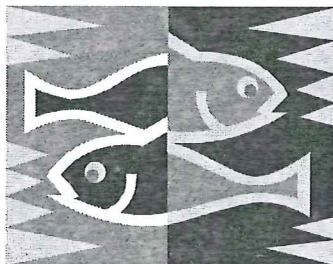
---

**Location:** Pool Deck



# Thursday, April 7, 2005

## Summit Starts (A Potpourri of Fish)



***7:30am - 5:00pm***

### ***Posters and Exhibits***

Posters will be displayed between 7:30am and 5:00pm. Poster presenters will be available to present their posters and answer any questions today between **11:00am** and **Noon**.

**Location:** Throughout conference area

***7:30am – 8:30am***

### ***Continental Breakfast***

**Location:** Grand Ballroom



***8:00am - 5:00pm***

### ***Registration***

**Location:** Just off hotel lobby

***8:30am – 9:30am***

### ***Plenary Session***

**Location:** Grand Ballroom

### ***Master of Ceremony***

**Dee Dee Rasmussen, Executive Director, Florida Campus Compact**



## ***Welcome and Opening Remarks***

---

Thomas Gamble, President, Brevard Community College

## ***Keynote***

---

### ***The Role of Higher Education: To Fish or Not to Fish***

**Ed Zlotkowski**, is a professor of English at Bentley College and the senior faculty fellow at Campus Compact. Since 1995, he has also served as general editor of a currently 19 volume series exploring the relationship between service-learning and academic disciplines/disciplinary areas. Through the Compact, he has designed and facilitated professional development opportunities in service-learning for provosts and deans as well as a series of summer institutes for engaged academic departments. He has written and spoken extensively on a range of service-learning topics, and regularly uses service-learning in his own teaching. His most recent book is *Service-Learning and First-Year Experience: Preparing Students for Personal Success and Civic Responsibility*.

**Abstract:** Using Stanley Fish's *New York Times* editorial, "Why We Built the Ivory Tower," Dr. Zlotkowski will further the challenge and conversation at the heart of our work. What should be the mission, roles and responsibilities of our campuses and institutions? How would you respond to the argument put forth by Stanley Fish?

***9:45am - 11:00am***

***1<sup>st</sup> Concurrent Session***

---

### ***Reclaiming "reflection:" Tapping the Academic and Civic Learning Potential of Service-Learning through Critical Reflection***

**Presenter:** Edward Zlotkowski, Professor of English, Bentley College.

**Abstract:** Among the most important outcomes of service-learning are enhanced mastery of discipline-based content and purposeful civic learning. Critical reflection—intentionally designed, structured per learning objectives, integrative, deepened via application of standards of critical thinking, and actionable—is key to achieving these outcomes. The workshop will offer participants concrete practices and tools that can be used in support of learning how to teach and learn through critical reflection, including an adaptable model.

**Location:** Sea Oats

---

## ***Civic Learning from the Mississippi Headwaters to the Gulf of Mexico: Exploring North-South Partnerships***

**Presenter:** Thomas Schnaubelt, Executive Director, Wisconsin Campus Compact

**Abstract:** Are all southerners bare-foot, nice, poor and ignorant? Are all Yankees cold-hearted, disingenuous, effete snobs? This session will begin a conversation about opportunities that exist to build partnerships between civic engagement programs (service-learning classes, community service programs, etc.) that allow students to confront regional stereotypes through personal interaction and exchange. Participants will brainstorm possibilities about potential program design, learning outcomes, and funding mechanisms. We'll avoid arguing over whether the civil war was "the war of northern aggression" or the "war of the great rebellion" and get straight to the task of building meaningful relationships that help students explore the meaning of citizenship in 21st century America.

**Location:** Board Room II

---

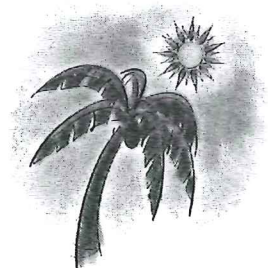
## ***A Service-Learning Model Adaptable for Research Universities, Small Liberal Arts Schools, and Community Colleges***

**Presenters:** Vincent Ilustre, Associate Director, Office of Service-Learning, Tulane University and Stephanie Slates, Senior Program Coordinator, Office of Service-Learning, Tulane University

**Abstract:** Tulane's Office of Service-Learning is directing a project to disseminate Tulane's model of Service-Learning to six other colleges and universities around the country. The project, supported by a three year grant from Learn and Serve America, aims to increase the impact of Service-Learning on students' civic engagement, build capacity in participating community agencies, and increase the institutionalization of Service-Learning on the partner schools' campuses. Participants in this workshop will learn about Tulane's model of Service-Learning that the Tulane program has disseminated to partner universities under the Learn and Serve America Grant.

**Location:** Sawgrass

---





## ***Student Ambassadors: Fostering Leadership and Improving Service-Learning Effectiveness and Efficiency***

**Co-Presenters:** Venessa Hernandez, Student Ambassador, Miami Dade College, Wendy Lopez, Student Ambassador, Miami Dade College, Krista Walker, Americorps VISTA Service-Learning Coordinator, Miami Dade College

**Abstract:** Peer education has been proven again and again to be the best method to encourage learning when choice is involved. One always learns most concretely from a “teacher” who is prepared, knowledgeable, enthusiastic, and most importantly, accessible and understanding of their “student’s” life situation. This interactive workshop led by a group of our student leaders, will feature Miami Dade College’s Student Ambassador model, an opportunity for enthusiastic young leaders to actively participate and help facilitate its service-learning program.

**Location:** Concierge

---

## ***Building Partnerships: Linking AmeriCorps NCCC to Community Needs***

**Presenter:** Jody Burns, Assistant Program Director for Training, AmeriCorps ★ National Civilian Community Corps

**Co-Presenter:** Hunter Phillips, Assistant Director, Office of Community Service-Learning, University of Southern Mississippi

**Abstract:** What would it be like if your organization suddenly had the resources of 10-11 enthusiastic young adults working full-time for up to eight weeks? Think of the impact! Best of all, there is very little cost to your community. The University of Southern Mississippi Office of Community Service-Learning will be highlighted as an example of a successful partnership and provide examples of how your community can apply for an AmeriCorps ★ NCCC team.

**Location:** Board Room I

---



## ***Service-Learning and Community Service: There is a Difference!***

**Presenter:** Kimberly Reese, Assistant Dean of Students, Xavier University of Louisiana.

**Co-Presenters:** Donielle Smith Flynn, Assistant Director Service-Learning,

**Abstract:** As the service-learning phenomenon gains momentum on college campuses and begins to overshadow community service programs across the country, many universities struggle to find a place for both programs to work together in harmony. Service-learning and community service serves a purpose in educating our students. There is considerable discussion on the differences of service-learning and community service. Learn how one university has built upon the strength of its Volunteer Services Office to develop a service-learning program. In partnership these two initiatives have received two Learn and Serve grants and other funding that highlight the strength and cooperation of both programs while understanding their differences.

**Location:** **Dunes II**

---

## ***Environmental Service-Learning and Community Engagement***

**Presenter:** Elizabeth R. Johnson, Dean, Associate in Science Degree Programs, Hillsborough Community College

**Co-Presenters:** Richard Senker, Assistant to Dean, Erica Moulton, Program Biologist and William Day, Human Services Professor

**Abstract:** Hillsborough Community College's Environmental Service-Learning project focuses on the beautification of Tampa Bay Boulevard, the road that is the gateway to the College's Dale Mabry Campus and to the Drew Park area of Tampa. The College has worked closely with the City of Tampa, the Mayor's Beautification Program, and the Drew Park Business Alliance to affect positive changes to this area. Students, faculty, and administrators from HCC, in collaboration with City of Tampa departments and the Mayor's Beautification Program, have implemented an environmental beautification plan to increase the aesthetics of the area, to accommodate the regulations of storm water management, and to build bridges with the College's community neighbors. Students in diverse courses, including Soils and Fertilizers, Freshman English I, Marketing, Macroeconomics, and Introduction to Computers and Technology are receiving educational and job related skill training that promotes environmental stewardship.

**Location:** **Dunes I**

---



**11:00am – 12:00pm**

***Poster and Exhibit  
Presentations***

---

**Location:** Throughout Conference Area

***Poster #1: Lighthouse Partnerships of the Mississippi  
Higher Education Consortium***

**Presenter:** Arnecca Byrd, Training and Partnership Development Coordinator, Mississippi Center for Community and Civic Engagement/Mississippi Higher Education Consortium

**Co-Presenters:** Jennifer Brewington, University of Southern Mississippi, Vickie Reed, University of Southern Mississippi, Vivian Davis, Rust College, John Martin, Delta State University, Hunter Phillips, University of Southern Mississippi, Katie Sparkman, East Central Community College and Eric Williams, Tougaloo College

**Abstract:** The Mississippi Higher Education Consortium efforts are focused on developing participants' understanding of democracy, history, civics, and service. To reach specific goals, MHEC utilizes the Lighthouse Partnership, which fosters a local partnership of K-8, postsecondary, and community/faith-based agencies that engage in coordinated efforts to enhance extended-day opportunities for low-income students by tapping into collegiate service-learning courses offered at Delta State University, Rust College, Tougaloo College, University of Southern Mississippi, and East Central Community College.

---

***Poster #2: Converting Composition: University of  
Central Florida, Purpose and Service-Learning***

**Presenter:** Colleen Dieckmann, Visiting Instructor, English Department, University of Central Florida (UCF)

**Abstract:** This poster session will illustrate one aspect of UCF's initiative to develop more Service-Learning classes. The process and product of Ms. Dieckmann's English Composition Students in her newly converted Service-Learning classes will be highlighted. Illustrations will include photos, written projects, testimonials, and other media to show the impact of the new teaching method for students, community partners, instructors, and administrators. The session will include both traditional posters, writing sample books, e-journals, and multimedia via lap top. Handouts will be available that highlight the conversion process, challenges and rewards.

---

### ***Poster #3: Nursing Students Reaching Out Through Community Partnerships to Help Underserved Populations***

**Presenters:** Diann Carr, MSN, ARNP, Assistant Professor, Barry University School of Nursing and Gene Majka, MS, ARNP, Instructor, Barry University School of Nursing

**Abstract:** Students at a local university nursing school focused their attention on migrant workers along with other underserved in Miami-Dade and Broward County. Based on their interest to contribute to the primary goal of Healthy People 2010, students developed programs to promote health and alleviate health care disparities for the underserved. They began establishing partnerships and prevention programs with Miami-Dade and Broward County community agencies and public schools along with performing community, cultural and needs assessments.

---

### ***Poster #4: Connecting Values and Vocation: Career Options for Those Who Want to Save the World***

**Presenter:** Hunter Phillips, Executive Director, Office of Community Service-Learning, University of Southern Mississippi

**Co-Presenter:** Heather Cronk, Campus Organizer, Idealist, University of Southern Mississippi

**Abstract:** Are you looking for a way to connect student volunteer interests in non-profit work to long-term career possibilities? Students' civic engagement does not end in the classroom or in college. Come hear about the American Humanics Program at Southern Mississippi as a model for connecting classroom curricula, community led workshops, and student organization leadership into a potpourri of opportunity for undergraduate and graduate level students as well as professionals in the community.

---

### ***Poster #5: Global Service-Learning: A Student-Lead Program***

**Presenter:** Ingrid Martinez-Rico, Ph.D., Assistant Professor of Spanish, Florida Gulf Coast University

**Co-Presenters:** Blanca Fernandez and Diana Fermín, students, Florida Gulf Coast University

**Abstract:** For the past four years, the Spanish Club at Florida Gulf Coast University has organized a week-long Service-Learning project to Santiago, Dominican Republic where students primarily work with street children. This poster presentation will illustrate the



conditions for street children in Santiago, some of the organizational and leadership skills that the students develop and the application of practical and realistic responses to poverty in the developing world.

---

### ***Poster #6: Early Childhood Reading Enhanced through University, College, and Child Care Facilities Partnership***

**Presenter:** Jamie Branam Kridler, Ph.D., Associate Professor, East Tennessee State University

**Co-Presenters:** Michelle Wyatt, B.S., East Tennessee State University, Child-Family Studies Field Study Student and Chrissie Anderson Peters, M.L.S., Librarian, Northeast State Community College

**Abstract:** A partnership between Northeast State Community College (NSCC), East Tennessee State University (ETSU) and local child care facilities created positive, exciting early childhood reading experiences. A field study student from ETSU worked with the librarian from NSCC to create a story-time program for area pre-school children. The program continues long after the field study ended and the former student continues her involvement with the program while developing new programs.

---

### ***Poster #7: University, Medical School, School System Partnership Creates Cross Disciplinary Service-Learning Opportunities***

**Presenter:** Jamie Branam Kridler, Ph.D., Associate Professor, East Tennessee State University

**Co-Presenters:** Elizabeth Lowe, Assistant Professor, Internship/Graduate Coordinator Clinical Nutrition, East Tennessee State, and Mary Langenbrunner, Associate Professor, Child and Family Studies Coordinator, East Tennessee State

**Abstract:** The Community Care Wellness Center, located onsite at a primary school with 25% high-risk students, is a collaborative effort between Washington County School System, East Tennessee State Medical College, and East Tennessee State University. Pediatric services as well as many support services from a variety of partners are coordinated. The workshop will focus on the collaborative partnerships and benefits offered families, children, medical residents, and students preparing for careers in support services for families and children.

---



## ***Poster #8: Center for Community Engagement, Learning, and Leadership***

**Presenter:** Jan Shoemaker, Director, Center for Community Engagement, Learning, and Leadership (CCELL), Louisiana State University (LSU)

**Co-Presenters:** Ari-Anne McGinnis, Service-Learning Student Advisory Council President, LSU, and Brett Landry, Service-Learning Student Council Vice-President, LSU

**Abstract:** Louisiana State University is implementing a structured approach to community engagement through The Center for Community Engagement, Learning, and Leadership (CCELL). This approach advances learning outcomes and develops leaders who practice their discipline with the highest sense of ethics and civic responsibility. Service-learning is a cornerstone of this strategy, which will refocus our academic objectives and elevate LSU's national reputation for strengthening and renewing the civic mission of research universities.

---

## ***Poster #9: Historically Black Colleges/Universities Service-Learning Consortium of Louisiana Target Areas***

**Presenter:** Kimberly Reese, Assistant Dean of Students at Xavier University of Louisiana, Historically Black Colleges/Universities Service-learning Consortium of Louisiana

**Co-Presenters:** Donielle Smith Flynn, Assistant Director Service-Learning, Xavier University of Louisiana

**Abstract:** Funded by Learn and Serve, the aim of the Historically Black Colleges/Universities (HBCU) Consortium of Louisiana is to impact the growth of community service and service-learning in the state of Louisiana and ultimately provide a service-learning model for minority service institutions. The Consortium's target areas are education, community health, civic engagement, cultural exchange, technical assistance, and K-12 Service-Learning mini grants. This poster presentation will highlight an innovative program, entitled the Service-Learning Cultural Exchange, created by the Consortium to dispel stereotypes, teach students about ethnic and religious differences, tolerance, and cultural identity with those that are different.

---



## ***Poster #10: The Effects of Pre-Service Teachers Attitudes on the Success of the Service-Learning Project***

**Presenter:** Monique Kimbell, Instructor/Director of Clinical and Field Experiences, Dillard University

**Co-Presenter:** A student participating in the Service-Learning project

**Abstract:** The relationship between the pre-service teachers' attitude towards the Service-Learning project and the success of the project are examined. A survey was administered to the pre-service teachers prior to engaging in the Service-Learning project to determine their attitudes towards the project. An assessment tool will be used once the project is complete. This research project is currently underway.

---

## ***Poster #11: The Service-Learning Student's Guide & Journal - Higher Education Edition***

**Abstract:** The *Service-Learning Student's Guide & Journal—Higher Education Edition* will help you make Service-Learning a more meaningful, educational, and character-building experience for your students while making it easy for you to establish and implement a Service-Learning program. You can see sample pages of the book at: [www.ServiceLearn.com](http://www.ServiceLearn.com). For more information contact Robert Schoenfeld at 206-722-1988.

---

## ***Poster #12: Into the Streets: How to Put on a Campus-Wide Program***

**Presenter:** Anne Cavazuti, Service Ministry Intern, Eckerd College Service Ministry Office

**Abstract:** Want to learn how to bring your campus together to do a one day community service program? Through this program you can touch on several different community problems and social issues that will catch the interest of a variety of people on your campus. Into the streets is a day that you can show your school community all of the organizations that are out in their greater community that your fellow students can get involved in.

---



## ***Poster #13: Faculty Perception of Community Based Learning: Building a Model for Success***

**Presenter:** Anne Hicks-Coolick, Ph.D., Associate Professor of Social Work, Kennesaw State University

**Co-Presenters:** Mary Lou Frank, Ph.D., Dean of Undergraduate and University Studies, Kennesaw State University and Richard Sowell, Ph.D., Dean of the College of Health and Human Services, Kennesaw State University

**Abstract:** Findings of a multi-method study of faculty members' perceptions of community-based learning activities (CBL) in the College of Health and Human Services at Kennesaw State University will be presented. Additionally, based upon study results and a review of the literature, a model for assisting faculty success in using CBL is described. The authors define "community-based learning" as all faculty-supervised community projects carried out by students including Service-Learning, internships, clinicals, service abroad and research.

---

## ***Poster #14: Integrating Service-Learning into Teacher Preparation: A Task-based Approach***

**Presenter:** Rev. Edward A. Blackwell, Jr., Ed. D., Assistant Professor, Department of Education, St. Thomas University

**Abstract:** The St. Thomas University Education faculty collaborated during the 2003-2004 academic year to identify tasks and courses where service-learning could be infused. Their efforts resulted in the infusion of Service-Learning into eight tasks. The tasks had been developed and infused into the undergraduate education curriculum to help students demonstrate the 12 Accomplished Practices. This workshop will discuss the selection process, the relationship between a task and Service-Learning and the implementation plan.

---

## ***Poster #15: Service-Learning at the University of South Florida Health Sciences Center: In the Classroom and in the Community***

**Presenter:** Ellen Kent, MPH, Faculty Coordinator for Special Projects, Area Health Center, University of South Florida

**Co-Presenters:** Janet DuBois, MS, ARNP, faculty member and clinical instructor in the USF College of Nursing and Ayfryie Johnson, MS ARNP, Faculty and Clinical Instructor, College of Nursing, USF and Wendy Martinez, Student, College of Nursing, USF



**Abstract:** This poster focuses on the evolution and expansion of the Health Sciences Center (HSC) Service Corps at University of South Florida. The HSC Service Corps serves as a clearinghouse for health related service projects that meet the needs of HSC students, faculty, and community agencies. The HSC Service Corps facilitates the process for students from different HSC academic programs to collaborate on service projects, both as class assignments, and as extra curricular volunteer activity

---

## ***Poster #16: Brevard Community College, Center for Service-Learning: An Embarrassment of Riches***

**Presenter:** Evelyn Young, Service-Learning Project Specialist, Brevard Community College (BCC)

**Co-Presenter:** Lynette Kearns, Service-Learning Coordinator, BCC, Ronnie Woods-Allen, Project Assistant, BCC, Alanna Haley, Administrative Specialist, BCC

**Abstract:** This exhibit will provide time to interact with Brevard Community College Service-Learning staff members and partake in the Center's wealth of stakeholder and program materials including forms, resource guides, office procedure's manuals, videos. Do not reinvent the wheel, get the kitchen sink for your program or course.

---

## ***Poster #17: Students Talking About Respect: A Civic Engagement Service-Learning Project***

**Presenter:** Kelli Saginak, Ed.D., Assistant Professor, University of Wisconsin Oshkosh, College of Education & Human Services/Campus Compact/AmeriCorps

**Co-Presenters:** Students

**Abstract:** This panel presentation will present a civic engagement community Service-Learning project; specifically, university students creating dialogue with 6th graders focusing on current social issues using the principles of Students Talking About Respect (STAR). The audience will participate in the development of the project from the ground up, including methods used to recruit and train college students, how to evaluate outcomes, and resources for program sustainability.

---

## ***Poster #18: Florida Alliance for Student Service (FASS) AmeriCorps\*Volunteers In Service To America (VISTA) Initiative***

**Presenter:** Laryn Flikkema, FASS VISTA Initiative Director, Florida Alliance for Student Service

**Co-Presenter:** Lynn Taff, Vista Leader, FASS VISTA Initiative

**Abstract:** The FASS VISTA Initiative serves as a link between K-12 schools, Higher Education institutions, and communities. Through structured service-learning opportunities, VISTA members are helping students to find sustainable solutions to combat poverty. VISTA's help to put dreams and visions into action. They facilitate community development via programming, infrastructure building, and community engagement. The initiative has built strong relationships with K-12 schools, Higher Education institutions, and their communities. AmeriCorps\*VISTA is a rich opportunity. Come explore the adventure!

---

## ***Poster #19: Executive PhD Program***

**Presenter:** Dr. Fran Bridges, Assistant Director, Executive, Ph.D. Program, Jackson State University

**Abstract:** The Executive Ph.D. (EPHD) in Urban Higher Education at Jackson State University (JSU) prepares professionals to assume senior leadership roles in post-secondary institutions and other organizations whose primary endeavors relate to or impact the operations of institutions of higher learning. The program will engage participants in the analysis of different facets of operations and management of post-secondary institutions and in the development of solutions to potential or existing challenges facing urban and metropolitan institutions. Students will master core knowledge in the field of higher education, and will develop a high level of analytical (quantitative and qualitative) research skills, complemented by an extensive breadth of relevant leadership knowledge in management, planning, and policy. Faculty and administrators associated with the program are committed to the continuous pursuit of knowledge in the discipline through demonstrated scholarship, effective delivery of instruction, and professional service to their fields and community.

---





## ***Poster #20: The Center for Community Health & Service Learning at Morehouse School of Medicine***

**Presenter:** Meryl McNeal, Ph.D., Principal Investigator/Associate Professor, Center for Community Health & Service Learning at Morehouse School of Medicine

**Abstract:** The Center - in partnership with HBCU's, community, and faith-based organizations - fosters civic engagement through a community health course for medical, graduate, and preventive medicine resident students. Health issues in underserved communities are identified and intervention strategies are planned to address them. The poster presentation will describe the history of our involvement in the community, course components, and will showcase how partnerships between medical professionals, universities, and the community can improve health and foster service learning.

---

## ***Poster #21: Multidisciplinary Service-Learning Abroad: You Better Belize It!***

**Presenter:** Margo M. Abadie, Ph.D., Associate Professor and Co-Program Director and Instructor, Louisiana State University (LSU) Study Abroad Course: Healthcare and Mental Healthcare in Belize

**Co-Presenter:** Regina Praetorius, MSSW, LCSW, Co-Program Director and Instructor, LSU Study, Abroad Course: Healthcare and Mental Healthcare in Belize, Louisiana State University (Academic Programs Abroad and School of Social Work)

**Abstract:** This presentation will focus on how an interdisciplinary, two-week long study abroad course at LSU in Baton Rouge incorporated service-learning as the primary means of immersing students in the Belizean culture. Though this course is housed in the LSU School of Social Work in partnership with the LSU Academic Programs Abroad Office, the faculty and students were multidisciplinary in composition: social work, nursing, rehabilitation counseling, and pre-medicine.

---

## ***Poster #22: EcoTeam: Building Environmental Service-Learning Partnerships between Higher Education and Elementary Schools***

**Presenter:** Stan Cross, Education Director, Environmental Leadership Center, Warren Wilson College

**Co-Presenter:** Susan Frey, Education Director, Jane Goodall Institute, Roots & Shoots



**Abstract:** EcoTeam is an environmental service-learning program designed by the Environmental Leadership Center of Warren Wilson College in collaboration with Jane Goodall Institute's Roots & Shoots. Session participants will learn how to start EcoTeam at their institution after learning how EcoTeam builds partnerships between higher education and elementary schools; prepares college students to facilitate service-learning projects and teach multi-disciplinary, place-based environmental education; and fosters civic engagement, and environmental awareness in elementary school and college students.

---

## ***Poster #23: Florida Campus Compact and Campus Compact Resource Exhibit: Vital Organizations for Service-Learning and Civic Engagement***

**Presenter:** Dee Dee Rasmussen, Executive Director, Florida Campus Compact, Luciano Ramos, Associate Director, Florida Campus Compact and other FCC staff

**Abstract:** Meet Florida Campus Compact (FCC) staff and learn about an array of materials, resources, and services FCC provides to members. Peruse FCC and Campus Compact publications, catalogs, and technical assistance materials.

---

***12:00pm – 1:30pm***

***Lunch and Awards***

**Location:** Grand Ballroom



## ***Introductory Remarks***

**Anthony Catanese, President, Florida Institute of Technology**

---

## ***Keynote:***

### **Multicultural Service-Learning**

**Michelle Dunlap**, Associate Professor of Human Development at Connecticut College, where she has engaged her students in service-learning for more than 10 years. She has published a series of journal articles and a book titled *Reaching Out to Children and Families: Students Model Effective Community Service*, all on the adjustment processes of hundreds of her students as they engage in cross-cultural service-learning. She is a member of the distinguished Campus Compact/AAHE consulting corps consisting of faculty experts on service-learning. She is a reviewer for several service-learning and diversity issues journals, and is the book review editor of *Sex Roles: A Journal of Research*. Her work has taken her throughout the United States, Finland and Russia.

**Abstract:** This keynote address is designed to address three related areas:

1. Programmatically, the diversity issues involved in service-learning and helpful supports for embracing diversity within the service-learning process.
2. In terms of courses, the ways that we can embrace rather than fear the diversity issues that arise in service-learning so that we can respond to such issues as an opportunity for enhancing one's curricula.
3. Institutionally, the commitment necessary for making service-learning programs successful. This may involve stake-holders thinking outside of the box and synergistically about service-learning, research and scholarship, as well as teaching. It may also involve putting financial, tenure, etc. priorities into place to further support the service-learning process.

## ***Awards Ceremony***

---

Vincent Ilustre, Associate Director, Office of Service-Learning, Tulane University



### **AWARD: Outstanding Community Partner Contributions to Service-Learning**

#### **Greater Baton Rouge Food Bank**

##### **Accepting for the Food Bank:**

Bonnie Bordelon  
Volunteer Coordinator  
Greater Baton Rouge Food Bank

An active partner with Louisiana State University (LSU), the Greater Baton Rouge Food Bank has enabled students in classes from communication studies to horticulture to nutrition to apply academic concepts in a community setting and meet a key goal in the LSU National Flagship Agenda.

As part of "innovative learning experiences that complement and enhance academic programs," students work in the warehouse, help with special events, share their computer skills, serve as ambassadors, contribute their writing skills, assist with gardening, and help organize food drives under the guidance of Bonnie Bordelon, Volunteer Coordinator, and the Food Bank staff.

Faculty members said that the bright spot in all partnerships has been working with staff members. The Food Bank willingly give of their busy time to collaborate with students in groups and individually and foster a service-learning experience that meets both community and academic goals.



## **AWARD: Outstanding Contributions to Service-Learning Research**

### **Dr. Barbara Moely**

Professor Emeritus  
Office of Service Learning  
Tulane University

Dr. Barbara Moely has been an outstanding and dedicated professor in the Psychology Department of Tulane University since 1972. Dr. Moely has worked toward the institutionalization of service-learning at Tulane University by establishing the Office of Service-Learning.

Dr. Moely has conducted extensive research on the impact of higher education service-learning on students and community members. She has led projects as well as supervised undergraduate and graduate students in their own research. Her research on the impact of service-learning on university students has resulted in the development of a successful measure used to assess changes in the civic attitudes and beliefs of students after participating in service-learning. Her research has demonstrated the positive change of student attitudes due to their participation in service-learning. Due to her strong research work in the field, she has been recently invited to join the Editorial Board of the Michigan Journal of Community Service-Learning.

In addition to her own research, Dr. Moely also helps foster student research. For example, Dr. Moely has supervised two Honors theses concerning service-learning. One study measured middle school students' attitudes and self-concepts regarding math achievement, while another examined the impact of service-learning on middle school reading levels. She also supervised another undergraduate study on the influence of service-learning on the retention and engagement of university students as well as the comparative rigor of the courses. In addition, Dr. Moely is supervising a graduate study on how community site supervisors view the service-learning students and the effect on the organizations.

## **AWARD: Outstanding Contributions to Service-Learning in Higher Education**

### **Dr. Melody Bowdon**

Assistant Professor  
Department of English  
University of Central Florida

Dr. Melody Bowdon's service-learning credentials clamor for recognition: she has extensive experience in teaching service-learning, she shows considerable evidence of engaged



scholarship, and she has had a significant impact on service-learning at University of Central Florida (UCF). In all, her service-learning teaching, scholarship, and attitude have made her a service-learning guru on the UCF campus.

Dr. Bowden has taught 32 service-learning courses at three universities. This includes 14 sections of undergraduate technical and professional writing, ten sections of undergraduate composition, three sections of undergraduate literature of AIDS, and five sections of graduate writing courses. Her intentional approach is to make service a part of the learning—not simply for the feel-good results, but primarily because her students learn better when they are engaged.

Dr. Bowdon helped to create the UCF Service-Learning Coordinating Committee and continues to serve on the Service-Learning Executive Board. She has been the Service-Learning Fellow at the UCF Faculty Center for Teaching and Learning since 2002. In all these positions, she has been instrumental in guiding service-learning at UCF to its position today, having institutional structure and university-wide credibility.

***2:00pm – 3:15pm***

***Concurrent Session II***

---

## ***Institutionalizing Service-Learning: Riding the Waves to the Summit of Service-Learning***

**Presenter:** Roger Henry, Director, Center for Service-Learning, Brevard Community College (BCC)

**Co-Presenters:** Dr. Amy Hendricks, Professor of Political Science and Chair Liberal Arts, BCC, Dr. Julia Derrick, Professor Economics and Chair Business, BCC, Amy Reiger, Assistant Professor History and Chair Liberal Arts, BCC, Dr. Phil Simpson, Professor English and Chair Communications and Humanities, BCC, and Marina Baratian, Associate Professor Psychology, BCC

**Abstract:** Join experienced service-learning faculty and staff in an interactive exchange about issues, challenges, strategies and sustaining service-learning programs and curricula. Learn from one of the oldest and best service-learning programs in the south and country! Using an institutional self-assessment (Furco, 2002), and small group discussion, workshop surfers will experience some of the following waves or sharks: strategic planning; faculty involvement, course development, incentives, and leadership roles on campus; student involvement and support; community voice, involvement and partnerships; institutional policies, procedures and coordination. YOU name it, we will discuss it! Bring boards to stay or fall off. Have fun and learn!

**Location: Board Room I**

---

## ***The Role of Service-Learning in Achieving Academic Success and Engagement in Majors Biology and Chemistry Courses***

**Presenter:** Miriam del Campo, Instructor, Miami Dade College (MDC)

**Co-Presenters:** Loretta Adoghe, Grant Director, Creating a Culture of Academic Success in Science Math and Engineering Program, MDC, Dr. Georgina Hart, Chemistry Discipline Coordinator, Creating a Culture of Academic Success in Science Math and Engineering Program, MDC and Haniel Pulido, Instructional Technologist, Creating a Culture of Academic Success in Science Math and Engineering Program, MDC

**Abstract:** Service-Learning, as a teaching-learning pedagogy, is utilized to create an effective culture of academic success in biology and chemistry courses at Miami Dade College-Kendall. Students conduct service-learning at partner agencies, such as the USDA; a win-win situation for all involved. This panel presentation will address the service-learning process and outcomes, plus the roles of administrators, faculty, students, and partner agencies. The service-learning course policy and students' service-learning requirements and accomplishments will be highlighted.

**Location:** **Dunes II**

---

## ***Community Feedback on Strategic Planning as a Service-Learning Project***

**Presenter:** Mary Ann Feldheim, Associate Professor, University of Central Florida

**Abstract:** In Service-Learning there are three partners for the process to work: the students, the faculty, and the leaders of community organizations. This paper presents the findings of a study of community leaders, who worked with students to develop an organizational strategic plan. These leaders provide valuable insights into ways to improve the collaborative, Service-Learning process. In addition, the value of the strategic planning process facilitated by the students is assessed and critiqued.

**Location:** **Dunes I**

---





## ***Strategies for Special Events Planning for Non-Event Planner***

**Presenter:** Mary Jo Ross, Assistant Professor, University of Central Florida

**Co-Presenters:** Megan and Cedar Watson, University of Central Florida

**Abstract:** If you have ever had an idea to help generate revenue for an organization, but did not know where to begin then this is a session for you. Events today help support marketing and economic success for communities and charities however designing and developing events is more than most faculty in higher education are used to producing. Learn some of the “how to’s” in event management to help you become a hero of your projects.

**Location:** Board Room II

---

## ***A Quantitative Evaluation of University Service-Learning Classes and Community-Based After-School Programs***

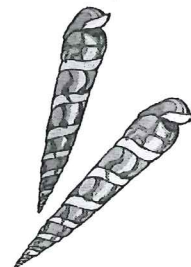
**Presenter:** William G. Wagner, Ph.D., Professor, University of Southern Mississippi

**Co-Presenters:** Vickie Blakely Reed, M.S., Program Director, Mississippi Center for Community and Civic Engagement, Sharonda Bristow, B.A., Director of Youth Programs, Mississippi Commission for Volunteer Service and Leah Claire Bennett, M.S., Research Assistant, Mississippi Center for Community and Civic Engagement.

**Abstract:** This program is a description of the quantitative evaluation services provided by the Mississippi Center for Community and Civic Engagement at The University of Southern Mississippi and the Mississippi Commission for Volunteer Service. The program is divided into four segments: 1) Training and supervision of service-learning staff, 2) Training and supervision of after-school program staff, 3) Analysis of student attendance; and 4) A quantitative evaluation of program outcome for five service-learning and six after-school programs in Mississippi.

**Location:** Concierge

---



## ***Multicultural Service-Learning: Engaging Diversity, Reflection, and Resources***

**Presenter:** Michelle R. Dunlap, Associate Professor of Human Development, Connecticut College

**Abstract:** This workshop is designed to explore methods by which the facilitators of the service-learning process can assist students in preparation for work in diverse community settings, including communities that are urban, traditionally disenfranchised, and/or of ethnic backgrounds that are unfamiliar to the service-learner. It will also explore ways to encourage the reflection and communication process among students concerning their experiences, and will outline approaches and resources that are helpful for facilitating this process.

**Location:** Sawgrass

---

## ***Playing It Smart: Promotion and Tenure Issues and Service-Learning***

**Presenter:** Marybeth Lima, Associate Professor, Louisiana State University

**Abstract:** This workshop is geared toward faculty interested in building their promotion and tenure records (or dossiers in general) using service-learning. The workshop is also intended to inform administrators of potential pitfalls in the faculty reward system, and how to best support their service-learning scholars. Topics include general tips for promotion and tenure, thinking about service-learning scholarship, building your record for promotion and tenure using service-learning, and advice for preparation and documentation.

**Location:** Sea Oats

---

***3:15pm – 3:45pm***

***Break with Refreshments***

---

**Location:** Conference common area





**3:45pm – 5:00pm**      **Concurrent Session III**

---

### ***Community and Higher Education School (CHES) Partnerships: Exploring Successful K-HE Collaboration***

**Presenters:** Barbara Baird, Curriculum Specialist, Brevard Community College and Maureen Bradley, Training/Technical Assistance Coordinator, Florida Community/Higher Education/School Partnerships

**Co-Presenter:** Bruce Manciangli, Director, Florida CHESP, Hope Ascher, Resource Teacher for Gifted, Brevard Virtual Campus and Service-Learning, Brevard County Public Schools

**Abstract:** This session will explore keys to successful CHES partnerships, strategies to develop and sustain those partnerships, and lessons learned, gleaned from four years of CHESP projects throughout Florida. Creating CHES partnerships can pose new challenges, but results in powerful service-learning opportunities with unique benefits to students, schools, and the community. The CHESP model, still underutilized in the field of Service-Learning, is key to promoting K-HE service-learning opportunities and holds greater potential for sustainability. Brevard Community College's Center for Service-Learning and Brevard County School Board partners will share their K-HE strategies and collaborative ventures.

**Location: Board Room I**

---

### ***Advancing Service-Learning Scholarship through State-wide Collaboration: The North Carolina Campus Compact Research & Scholarship Initiative***

**Presenter:** Patti Clayton, Coordinator, Service-Learning Program, North Carolina State University

**Co-Presenters:** Members of the North Carolina Campus Compact (NCCC) Research and Scholarship Initiative Working Group, including Lynne Bercaw, Assistant Professor of Curriculum & Instruction, Appalachian State University, Ben Ramsey, Associate Professor of Religious Studies and Service-Learning Faculty Fellow, University of North Carolina – Greensboro, Terina Roberson, Chair, Sociology and Psychology, Central Piedmont Community College and Dr. Beth Warner, Assistant Professor of Human Services, Elon University

**Abstract:** North Carolina Campus Compact is conducting a "Research & Scholarship Initiative:" a scholarly collaboration among member campuses designed to tap and advance the experience and expertise of service-learning practitioners across the state. Panelists will discuss:

- Evolution of our process
- Particular research projects
- Benefits and challenges for North Carolina, other states, and the field

Participants will consider how they might conduct similar collaborative scholarship and be invited to share suggestions for this Initiative.

**Location:** **Sawgrass**

---

## ***Making Community Service a part of Political Science Classes***

**Presenter:** Bob Press, Assistant Professor of Political Science, University of Southern Mississippi

**Abstract:** Challenge students with the opportunity to do community service as part of their credit work and the results are amazing. Despite initial doubts and time constraints, American Government students met the requirement of ten hours of community service plus a policy paper; a seminar fanned out to put on 'hunger banquets' (from Oxfam) in public schools, teaching what they had learned about global income disparity. Their reflection papers are heartening.

**Location:** **Dunes I**

---

## ***The Fundamentals of Service-Learning Course Construction***

**Presenter:** Kerrissa Heffernan, Associate Director, Swearer Center for Public Service, Brown University

**Abstract:** This presentation will draw upon an overview of over 900 service-learning syllabi and is designed to assist faculty in integrating service into an existing course or in constructing a new course using service-learning. Participants will examine disciplinary models for service-learning, the basics of service-learning course construction, review service-learning assignments and examine courses that focus on the civic capacities of Service-Learning. Participants are encouraged to bring syllabi and course materials.

**Location:** **Sea Oats**

---



## ***The Modified Snyder Evaluation Process: Building Research Capacity in Service-Learning Programs***

**Presenter:** Rev. Edward A. Blackwell, Jr., Ed. D., Assistant Professor, Department of Education, St. Thomas University

**Co-Presenters:** Ramona Frischman, Ed. D., Director, Office of Community Services, Miami Dade County Public Schools

**Abstract:** An important aspect of most grants is evaluation and a pressing need of Service-Learning is the development of well-designed research strategies. The Modified Snyder Evaluation Process has been developed to link these two activities and to help Service-Learning project directors understand the capacity of a particular project or program to support a research agenda. The workshop will present material on the process and its use in evaluating the oral history and civic engagement service-learning projects sponsored by the Miami-Dade County Public Schools' Office of Community Outreach.

**Location:** **Board Room II**

---

## ***Values and Vocation: Supporting Student Efforts to Align the Personal and Professional***

**Presenters:** Heather Cronk, Campus Organizer, Action Without Borders-Idealist.org and Hunter Phillips, Assistant Director, Office of Community Service-Learning, University of Southern Mississippi

**Abstract:** Student civic engagement does not end in the classroom, or even in college. Are you looking for a way to connect student volunteer interests with long-term career possibilities in the nonprofit sector? Would you like to learn about resources available to you and your students from both an international and campus-based perspective? Come hear about nonprofit career development from Idealist.org and the nonprofit career certification program at the University of Southern Mississippi. You will explore some of the tricks to helping students explore the nonprofit sector, as well as how to dispel some of the "myths" about nonprofit careers. You will also learn about the American Humanics Program at Southern Miss – a model for connecting classroom curricula, community-led workshops, and student leadership that result in opportunities for student exploration of nonprofit work.

**Location:** **Dunes II**

---

## ***Hit the Ground Running: Challenges in Starting a Service-Learning Program from Scratch***

**Presenter:** Cynthia B. Robertson, Director, Medical Radiologic Technology, Cy-Fair College

**Co-Presenter:** Idolina Hernandez, Faculty Service Learning Coordinator and Professor of Sociology, Cy-Fair College

**Abstract:** In the fall of 2003 Cy-Fair College opened its doors as the newest member of the North Harris Montgomery Community College District. Opening a campus with a student enrollment of over 7,000 students and a completely new faculty was no easy feat. The Learning Signature adopted by the faculty and administrators served as a mandate for establishing a Service-Learning program that would support outstanding learning outcomes. This session will highlight some of the challenges that were faced in planning for Service-Learning and will identify some of the failures and successes. Data related to faculty educational and instrumental needs will also be addressed.

**Location:** **Concierge**

---

---

**6:00pm – 6:15pm      *Interest Group Appetizers***

---

**Location:** Grand Ballroom

---

**6:15pm – 7:15pm      *Interest Group Roundtables***

---

**Location:** Grand Ballroom

Interest Group Roundtables are discussion groups based on the interests of those attending the conference. Visit the **Roundtable Sign-Up Station** (conference registration area) to sign up for an existent group or create your own.

Scheduled roundtables:

- State Service-Learning program coordinators/staff
- Linkages/Partnerships with K-12 schools
- Community Partners
- Service-Learning program coordinators/staff
- Faculty in pre-professional programs (nursing, teacher education, etc.)
- Faculty in technical fields (sciences, math, engineering, etc.)
- Faculty in liberal arts, humanities, social sciences, etc.
- Assessment, Evaluation, and Research in Service-Learning
- Student Service-Learning leaders
- Student volunteers or service-learners



- College/University administrators
- Your topic or group
- Suggested topic or group

---

**7:15pm**

***Dinner and Discourse***

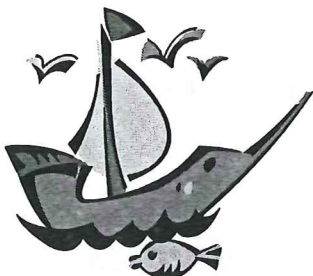
---

**On Your Own**



**Friday, April 8, 2005**

**The End of the Beginning (The Release)**




---

**7:30am - 12:00pm**

***Posters and Exhibits***

---

**Location: Throughout conference area**

---

**7:30am - 8:30am**

***Continental Breakfast***

---

**Location: Grand Ballroom**




---

**7:30am - 9:00am**

***Registration***

---

**Location: Just off hotel lobby**

**8:30am – 9:45am      Concurrent Session IV**

---

## ***Learning to Serve, Learning to Fail – In Business***

**Presenter:** Clive Muir, Assistant Professor, School of Business, Stetson University

**Abstract:** What happens when a well planned, properly executed service-learning project fails? This presentation describes the heightened expectations and disappointing outcomes experienced by a group of business students in a “badly-needed” community service project. It will discuss ways that instructors and project coordinators can help soften the blow, and also show why failure, even in a sure-fire endeavor, can enhance participants’ professional and personal development.

**Location:** Board Room I

---

## ***SACS Wax: What’s in the Accreditation Pipeline for Service-Learning?***

**Presenters:** Lyvier Conss, Executive Director, Community College National Center for Community Engagement and Rosemary Layne, Collegewide Dean, Faculty Credentialing & Recruitment, Brevard Community College

**Abstract:** Recent changes in criteria within the Southern Association of Colleges and Schools (SACS) provide an exciting opportunity for service-learning faculty and other academic leaders. This interactive workshop focuses on giving service-learning a voice in the college reaffirmation and institutional improvement processes! Become a savvy surfer, avoid the sharks, and ride the accreditation wave with ease. Learn how to infiltrate key decision making processes, find good fits within the Principles of Accreditation, and ensure that service-learning is included in the institution’s Quality Enhancement Plan (QEP). Learn from two individuals who served as QEP Lead Evaluators on a recent SACS on-site visit.

**Location:** Board Room II

---



## ***Purposeful Civic Learning: The Missing Link in Service-Learning***

**Presenters:** Josh Young, Director, Center for Community Involvement, Miami Dade College

**Co-Presenters:** Luciano Ramos, Associate Director, Florida Campus Compact and Ossie Hanauer, Miami Dade College Campus Director

**Abstract:** Fostering civic responsibility is one of the most frequently mentioned goals of service-learning, however, it tends to be an unrealized goal. Are we doing enough to purposefully prepare students for active civic participation in a diverse democratic society? This interactive workshop will explore the concept of “purposeful civic learning” and will provide concrete examples of how educators can guide students to develop the knowledge, skills, and values necessary to be effective citizens.

**Location:** **Sawgrass**

---

## ***The Development and Refinement of Models for Less Established and More Established High School Environmental Service-Learning Programs in Florida***

**Presenter:** Yulia Malikova, Ph. D. Candidate, Florida Institute of Technology

**Abstract:** This dissertation study explores the status, nature, and effects of secondary and post secondary Florida Environmental Service-Learning programs. Comparison between high school and college Environmental Service-Learning programs will be presented. Final models for less and more established high school programs will be discussed. Conclusions and recommendations about the elements of successful Environmental Service-Learning programs will be offered.

**Location:** **Dunes II**

---

## ***From the Couch to the Community: How Reflection Can Motivate Service-Learning Students toward Social Change***

**Presenter:** Ari-Anne McGinnis, Service-Learning Student Advisory Council President, Louisiana State University



**Co-Presenters:** Brett Landry, Student Advisory Council Vice-President and Lyndsay Liddell, Student Advisory Council Secretary, Louisiana State University (LSU)

**Abstract:** How, when, where, and why does reflection become a catalyst for action? A panel of LSU (A&M) students will present their experiences in service-learning classes in various disciplines. Students will discuss from their vantage point why reflection is important, what reflective methods are more effective, the role of the professor in a service-learning classroom, as well as how all of these aspects contribute to the broader focus on social change.

**Location:** Sea Oats

---

### ***The Ghana Project: A Matrix for International Service-Learning***

**Presenter:** Marcia Ladendorff, Assistant Director of the Honors Program, University of North Florida

**Co-Presenters:** Heather Burk, Service-Learning Coordinator of the Honors Program, University of North Florida, and Megan Barber, Katrina Meyers and Jessica Watkins, students, University of North Florida

**Abstract:** What started as a straight-forward international trip to Ghana has evolved into a dynamic Service-Learning venture that immerses American students in this 'foreign' world. Integrating economics, politics, and health, this project partners with Ghanaian communities and students, addressing the challenges facing this West African nation. Come hear how it began and how it is evolving. Brainstorm about effective planning, execution and assessment as this interdisciplinary venture develops into a complex multicultural exploration.

**Location:** Dunes I

---

### ***The Indicators of Engagement: Lessons Learned from the Community Colleges and Minority Serving Institutions***

**Presenter:** Rosalyn Jones, Campus Compact Engaged Scholar and Dean, Johnson C. Smith University

**Co-Presenters:** Angela Jeter, Johnson C. Smith University and Robert Franco, Kapi'olani Community College

**Abstract:** As part of a grant from the Carnegie Corporation of New York, Engaged Scholars from Campus Compact visited community colleges across the country during in 2003, and minority-serving institutions in 2004 to identify & document their approaches to indicators of civic engagement. In the presentation we will describe assessment strategies for measuring the Indicators of Engagement, case examples from institutions, and ideas for applying findings to one's own academic setting.

**Location:** **Concierge**

---

***10:00am – 11:15am***

***Concurrent Session V***

---

## ***Addressing the Challenges Related to Diversity and Learning***

**Presenter:** Carol A. Jeandron, Ph.D., Director of the Office of Service Learning, Loyola University New Orleans

**Co-Presenter:** Erice E. Doss, Ed.D., Administrator to Student Affairs Division, Tennessee State University

**Abstract:** The inclusion of diversity enriches the educational experience of students by enhancing learning, promoting personal growth, and preparing good citizens in an increasingly complex, pluralistic society. In providing leadership for change, education institutions provide the vision, commitment and direction essential to enhancing the educational advantages of diversity. Through discussion and interactive activities, presenters will examine the rationale for diversity education, the many facets of diversity, and "Best Practices," emphasizing service-learning for providing diversity opportunities.

**Location:** **Sawgrass**

---

## ***Service-Learning from a Community Perspective***

**Presenter:** Barbara Baird, Curriculum Specialist, Center for Service-Learning, Brevard Community College

**Abstract:** How can service-learning programs help community organization supervisors most effectively oversee college service-learners? In order to have strong partnerships with community agencies, the organizations, the college and the students need to help each other get the most effective results for all involved, which includes honest feedback and strong

relationships which are nurtured and supported. This session will explore these relationships from the community perspective through a panel discussion of seasoned service-learning agencies.

**Location: Board Room I**

---

## ***Doing, Writing, Research: Keys to Effective if not Dramatic Learning***

**Presenters:** Alex Salinas, Instructor, Miami Dade College; Publications Editor, Center for Urban Education & Innovation and Bonnie Kathryn Smith, Assistant Professor of English, Belmont University

**Abstract:** This panel will explore different venues that use writing or research in forging strong linkages in the community and providing appropriate contexts for student learning. At Miami Dade College, Service-Learning provides a context in writing classes for a dialogue about prejudice and other issues. Students tutor children at community centers in low-income neighborhoods. As students interact with these children, the writing and discussion during the semester flows from what they expected to find, to what they're actually experiencing, to the inevitable gaps between expectation and reality. We try to "read" the Service-Learning experience as a narrative about undermining stereotypes. Bonnie Kathryn Smith, from Belmont University examines early efforts to forge a relationship between Belmont University's Scholar Community Program (a summer program linking professors' scholarly and undergraduate research) and Magdalene, an unusually successful recovery program for women with a history of criminal prostitution and addiction.

**Location: Dunes II**

---

## ***Creating Self-Designed Service-Learning Experiences***

**Presenter:** Brandon Whitney, Reflection Leader, North Carolina State University

**Abstract:** This session will examine the concept and process of creating self-designed intensive service-learning experiences, drawing on a model developed over several years at NC State. The presentation will focus on the presenters' recent experience designing and undertaking a six month project in Ecuador and share similar projects undertaken by other students. Discussion will focus on the adaptation of service-learning for a self-designed program, examining benefits and challenges and templates/resources.

**Location: Concierge**

---



## ***Faculty Views of Service-Learning Training: Implications for Institutionalization***

**Presenter:** Richard L. Conville, Professor Department of Speech Communication, University of Southern Mississippi

**Abstract:** We know little about the contents of consciousness that faculty members bring to and develop during training in service-learning. Such insiders' views would provide valuable guidance to those concerned with institutionalizing service-learning. In order to investigate this uncharted territory, Conville and Borden analyzed focus group sessions of faculty members who had recently participated in semester long seminars in service-learning. The narratives were examined for their major themes and probed for dialectical oppositions among those themes.

**Location:** Board Room II

---

## ***Developing Service-Learning Infrastructure: Cracking the Institutional Monolith***

**Presenters:** Jan Shoemaker, Director, Center for Community Engagement, Learning and Leadership (CCELL), Louisiana State University

**Abstract:** What is our message? Who needs to know? How do we move Service-Learning from a few committed faculty doing wonderful work to a campus culture that values and rewards civic engagement. In this session you will: 1.) Clarify the message that directors deliver to various constituents. 2.) Identify resources for and challenges to civic engagement. 3.) Develop strategies and plans for building service-learning infrastructure, primarily at the higher education level.

**Location:** Sea Oats

---

## ***Service-Learning on the Hero's Journey: Service in International Experiences and Education***

**Presenters:** Brian MacHarg, Director of Service Ministry, Eckerd College

**Abstract:** Study abroad programs and service-learning are two experiential pedagogies that can have a profound impact on higher education students. This workshop will explore the benefits and challenges of planning and leading international service-learning opportunities. We'll look at international service through the eyes of Joseph Campbell as well as current

research that explores the effectiveness of such programs. We'll also look at practical ways to organize international service-learning experiences.

**Location: Dunes I**

---

***11:45am – 1:30pm***

***Lunch***

---

**Location: Grand Ballroom**



---

## ***Introductory Remarks***

**Terry Hickey, Provost, University of Central Florida**

---

## ***Keynote***

### ***Civility and Civic Engagement***

**Paul Elsner**, Chancellor Emeritus, Maricopa Community College District, is founder and President of the Sedona Conferences and Conversations, Paul Elsner and Associates, and Los Vientos, Inc. - organizations dedicated to worldwide education.

Dr. Elsner served as Chancellor of the Maricopa Community College District in Arizona from 1977 until 1999. Throughout his career as professor and administrator, Dr. Elsner served in various capacities for organizations such as Educational Testing Service, American Association of Community Colleges, American Council on International Intercultural Education, League for Innovation, and Campus Compact. Among his many awards are the Anderson Medal for co-founding "The Think Tank," the AACC Community Colleges' Leadership Award, and the Harold W. McGraw, Jr. Prize in Education. *The Chronical of Higher Education* and *Change Magazine* named him as one of the most influential college leaders of our time. His current efforts to advance the cause of education have led him to speaking engagements on six continents.

**Abstract:** Dr. Elsner served on the original Georgetown Campus Compact Executive Committee, which formed the early foundation for Higher Education's pervasive entrance into service through volunteering in the early 80's. Dr. Elsner will trace the motivations of the early founders of this movement and the challenges that were faced. The movement of which most all of the participants at this conference have helped build and sustain seemed to originate at the time of Tom Wolfe's publishing of the widely read *Bonfire of the Vanities*, a reaction to the junk bond scandals and the ever evolving "me, too" generation. Dr. Elsner will

also reflect on the possible impact of the Astin freshmen attitude studies which showed relevant longitudinal trends that may have helped mobilize a national service movement. Dr. Elsner will also attempt to draw a contemporary picture of how far we have come but in the face of even more daunting challenges ahead. Elsner will also address the topic of his forthcoming book on Civility in the Academy.

---

## ***The Challenge of Benefiting Host Communities***

**Presenter:** Kerrissa Heffernan is the Associate Director of the Swearer Center for Public Service at Brown University and Director of the Royce Fellowship. Previously she was Senior Associate in Integrating Service with Academic Study at National Campus Compact and the Arnow-Weiler Professor of Liberal Arts at Lasell College, Director of the Center for Public Service and Director of the Donahue Institute for Values and Public Life. She is the co-editor of the *The Practice of Change: Concepts and Models for Service-Learning in Women's Studies*, co-editor of the *Introduction to Service-learning Toolkit: Readings and Resources for Faculty* and author of the *The Fundamentals of Course Construction*

---

**2:00pm - 3:15pm**

**Concurrent Session VI**

---

## ***Making the Case for Civic Engagement and Civility on Campus***

**Presenter:** Paul Elsner, Chancellor Emeritus, Maricopa Community College District, President of Sedona Conferences and Conversations, Paul Elsner and Associates, Los Vientos, Inc.

**Abstract:** Dr. Elsner will provide more in-depth insights into his new book on Civility and the Academy and continue the discourse from his keynote address.

**Location:** **Dunes II**

---

## ***Creating and Maintaining Solid Relationships between Community Partners, Students, and Faculty***

**Presenters:** Ann Marie Kinnell, Ph.D, Assistant Professor of Sociology, University of Southern Mississippi and Ossie Hanauer, Campus Director, Miami Dade College



**Abstract:** Fostering solid community partnerships is the backbone of any service-learning program; however, the forming of these alliances may be seen as a complex process. Further, some community partners seem ill-prepared to manage service-learning students. A survey of students, faculty members and community partners was conducted by The University of Southern Mississippi in order to investigate this issue and a panel of teaching faculty, agency representatives and students will respond to the findings. Miami Dade College's service-learning director and faculty coordinator will then present one solution to this issue through an interactive session of its community partner training. Several handouts will be used to illustrate ways to develop and maintain an effective service-learning program with this essential stakeholder.

**Location:** Sawgrass

---

## ***Using Technology to Enhance Service-Learning Outcomes***

**Presenter:** Myra Day, Special Projects Coordinator, North Carolina State University and Kerry Purmensky, Assistant Professor, University of Central Florida

**Abstract:** In this session we will discuss how Web Logs (Blogs) and Electronic Tutorials can be great tools for students and instructors engaged in Service-Learning projects. Using both these technologies, instructors and students can easily follow progress, address concerns, and focus on triumphs throughout the project. We will discuss how blogs create an opportunity for students to reflect on their experience and share it with others; and, we will demonstrate how an electronic tutorial can help students produce higher quality written reflection about their service experiences, and help faculty provide better feedback of written reflection product.

**Location:** Concierge

---

## ***Service-Learning Designation: Creating a Service-Learning Course Approval Process***

**Presenter:** Linda Hargreaves, Service-Learning Coordinator, University of Central Florida

**Abstract:** If service-learning is to be taken seriously by faculty and administration, it seems crucial to talk about how Service-Learning courses meet common expectations of academic rigor and service to the community. When the provost allocated enhanced funding for service-learning courses at UCF, our service-learning coordinating committee created a criteria and procedure for Service-Learning course approval. In this workshop, we will discuss UCF's service-learning course approval system and help create a procedure that will work for your campus.

**Location:** Dunes I

---

## ***Maintaining Communication and Enhancing Quality Among Service-Learning Stakeholders***

**Presenter:** Amanda Buberger, Senior Program Coordinator, Tulane University Office of Service-Learning

**Abstract:** In Learning Circles, workshop participants will share how communication is maintained and quality assessed within Service-Learning programs at their own institutions. Attendees will walk away with ideas for improving their own practices, get to intimately know various models and become part of a network of practitioners interested in enhancing communication and refining assessment within their Service-Learning programs.

**Location:** **Board Room I**

---

## ***Nonprofit Professionals Can Get Hands On***

**Presenter:** Delores Druilhet Morton, AmeriCorps Program Manager, Hands On Network

**Co-Presenters:** Lisa Flick, Director of Programs and Services, Hands On Network and Megan Ramos, Outreach and Recruitment Manager, Hands On Network

**Abstract:** The prevailing theory in the “hands on” model of civic engagement is that with adequate community infrastructure, any individual can transition up a ladder of service from community member to active citizen. This theory posits that the newly professionalized sector reinforces civic engagement. In this session, participants will explore how to integrate the “hands on” theory into their professional roles for effective volunteer engagement.

**Location:** **Board Room II**

---

## ***Service-Learning Fellows: A Model Teaching, Research, and Service***

**Presenter:** Carol E. O'Neil, Associate Professor, Louisiana State University (LSU)

**Co-Presenters:** Marybeth Lima, Associate Professor, Department of Biological and Agricultural Engineering, LSU, and Frank M. Bosworth, Service-Learning Fellow, and Director of the Office of Community Design and Development in the School of Architecture, LSU

**Abstract:** The Louisiana State University's Offices of Academic Affairs and Community Engagement, Learning, and Leadership provide a unique faculty service-learning fellowship that helps to develop institutional understanding of the theoretical concepts associated with the scholarship of engagement. Service-learning fellows provide leadership in planning, teaching, research, and service. Herein, the LSU model will be explained and past and present LSU Service-Learning Fellows, will explain specifically their contributions to service-learning scholarship and how to develop a similar program.

**Location: Sea Oats**

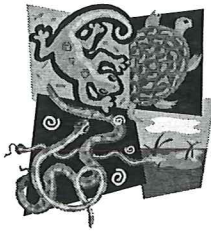
---

***2:00pm – 4:30pm***

***Service-Learning Project***

---

**Site: South Central Regional Water Reclamation System (SCRWS) project at the Viera Wetlands**



This is an awesome opportunity to get your feet wet in a real, hands-on field experience. Work with service-learning students and faculty and experience Florida while doing ecological activities. Take some great photos. Registration is limited to 30 people. Sign up by reserving a space today. Visit the Sign up Station at Summit Registration table. Transportation provided by Brevard Community College vans!

**Location: Viera Wetlands**

**Meet in the lobby of the Hilton Hotel**

---



## Summit Hosts



*Florida* | Campus Compact



*Florida Institute of Technology*

## Summit Sponsors

**\* Auburn University \* Brevard Community College \* Broward Community College  
\* Campus Compact \* Community College National Center for Community  
Engagement \* Florida Campus Compact \* Florida Gulf Coast University \* Florida  
Institute of Technology \* GEAR UP MS at the Mississippi Institutions of Higher  
Learning \* Indian River Community College \* Louisiana State University \* Miami  
Dade College \* Mississippi Center for Community and Civic Engagement,  
University of Southern Mississippi \* Mississippi Commission for Volunteer Service  
\* New College of Florida \* Tulane University \* Tulane University Office of Service  
Learning \* Tulane University Center for Latin American Studies \* University of  
Central Florida \* Xavier University of Louisiana \***